

KFRI Research Report 309  
(Project KFRI /451/2004, April 2004 to September 2005)

## **Digitization of KFRI Scientific Papers 1 to 1100 and Research Reports 201 – 250**

**K. Sankara Pillai**

**K. F. George**

Library and Information  
Kerala Forest Research Institute  
Peechi 680 653, Kerala, India

December 2007

## ABSTRACT OF THE PROJECT PROPOSAL

1. Project No. Kfri 451/2004
2. Title Digitization of KFRI Scientific Papers 1 – 1000 and Research Reports 201-250
3. Objectives Digitize KFRI Scientific Papers 1- 1000, Research Reports 201- 250 and bring out a searchable CD
4. Project Period April 2004 to September 2005
5. Investigators K. Sankara Pillai and K.F. George

## CONTENTS

Acknowledgement	i
Introduction	1
Materials and Methods	1
Softwares Used	2
Search Strategy	2
System Requirements	2
Installation	3
Conclusion	3
Research Reports	4
Scientific papers	7

## ACKNOWLEDGEMENTS

We thank Dr. J.K. Sharma, former Director, Kerala Forest Research Institute for support and encouragement. We also thank Dr. R. Gnanaharan, present Director for encouragement

We thank Mrs. N. Sarojam our colleague in the Division and Mr. Rajasekharan, Librarian, Kerala Institute of Local Administration, Mulankunnatukavu for their valuable suggestions and contributions.

Thanks are also due to Miss Prathiba Prabhakar and Mr. Sebastian who had done the computer scanning work

## INTRODUCTION

Kerala Forest Research Institute, Peechi has been conducting multifarious research on all aspects of forestry including wildlife and wood science and technology from the inception of the Institute in 1975. Basic studies or advanced problem solving forestry issues are being taken up for research with specific objectives on a time bound basis with internal or external funding. On completion of each project a report is published. Each such report is assigned with a serial Research Report Number. Every report invariably contains the concepts, objectives of the study, methodology, data generated, analysis and the results of the study. These reports contain lot of information generated during the course of the study, which will be quite often useful for field application or for conducting similar type of studies. By the end of 2003, KFRI had completed 250 Research Projects.

The scientists of the Institute also publish scientific articles in national or international journals. Publication of scientific articles are one of the activities of the scientists. While they do research, information is generated, which they publish as books or in journals for the benefit of others. Journal articles are generally peer reviewed as a result of which they maintain a higher standard. The scientists of KFRI had published about 1000 scientific papers in journals by the end of 2003. Each article published in journals or in seminar proceedings were documented by assigning a serial Scientific Paper Number. These scientific papers are very useful to other researchers, forest officials, teachers and students of forestry and all those who are associated with forests and forestry.

As every other Library does, KFRI Library also has been documenting these Research Reports and Scientific Papers. When number of these publications increased considerably, it has become difficult to locate Research Reports and Scientific Papers on a specific subject or of specific authors. In addition, the Scientific Papers published in the earlier years become brittle and was difficult to handle.

The only alternative for the above two problems is to digitize Research Reports and Scientific Papers and bring them out in CD using a search engine to facilitate retrieval of desired documents. The Library had digitized first 200 Research Reports in 2001 and brought out in a CD. The present CD will be containing Research Reports 201 to 250, Scientific Papers 20 – 1050. There are no Scientific Papers with numbers 1-19. WINISIS is the search program used in the CD for retrieval of documents.

## MATERIALS AND METHODS

Target of the work is to digitalize Research Reports 201 to 250 and Scientific Papers 1 to 1000. These Research Reports and Scientific Papers in electronic form are to be retrieved by search. Each report and scientific paper was scanned using a scanner to pdf. For legibility and correctness each scanned page was edited using the OCR package, Omni Page Pro 14. These reports and papers were arranged into files.

For the following Research Reports only abstracts have been provided as these have been published as priced books.

1. Sankaran, K.V. 2001. Integrated management of the alien invasive weed, *Mikania micrantha* in the Western Ghats. KFRI Research Report 202
2. Sharma, J.K: Balasundaran, M 2001. Root trainer technology for mass production of clonal planting stock. KFRI Research Report 213

## SOFTWARES USED

For editing the pdf of scanned images, Omni Page Pro 14 was used. WIN ISIS is another program used for data entry and retrieval. CDS/ISIS is bibliographic software developed by UNESCO when DOS was the prevalent platform. Later Microsoft came up with Windows which became popular. Then ISIS has been modified to suit MS Windows, known as WINISIS. GENISIS was used for writing the CD

A sample of Field Definition Table, Worksheet used for data entry and the Home page are appended.

## SEARCH STRATEGY

Five aspects singly or in combination can be searched. The search fields are Title, Author, Year, Source and Category. In the title field one can make single word search or multiple words using “;” (semicolon) in between the words. Eg., bamboo; teak. Single author search and combination of authors also can be searched like wise. To know an author has how many articles on a particular subject is possible by entering them in the specific fields. Year is used to know how many articles are published in a particular year. Standard abbreviations has been used in the source field eg. Indian For.; J. Econ. Taxon. Bot. etc. Category refers to Scientific Papers or Research Reports represented by SP and RR. \$ is used as truncation in this search. To go to full text one has to click to pdf shown at the bottom of each search output

## SYSTEM REQUIREMENTS

- Operating System: Windows 95 or above
- 300 Mhz CPU Processor
- Internet Explorer 4.0 or above, 64 Mb RAM
- Adobe Acrobat Reader 5.0 and above

## INSTALLATION

- Insert the CD ROM in the CD Drive
- Open the “Windows Explorer”
- Click on the CD ROM drive icon
- Double- click SETUP.EXE
- The CD ROM search engine will install by default in the following folder:  
C:\Program Files\CD- KFRI\KFRI CD1.1 (Set up program issues messages and dialogues in French because GENISIS is developed in French)

## CONCLUSION

KFRI Research Reports 201 to 250 KFRI Scientific Papers 1 to 1050 have been digitized and brought out in a CD which can be searched by author, title and subjects. Retrieved information on specific search will bring together all available information together.

**KFRI CD 1.1**

	Title	<input checked="" type="radio"/> and <input type="radio"/> or
and	Author	<input checked="" type="radio"/> and <input type="radio"/> or
and	Year	<input checked="" type="radio"/> and <input type="radio"/> or
and	Source	<input checked="" type="radio"/> and <input type="radio"/> or
and	Category	<input checked="" type="radio"/> and <input type="radio"/> or

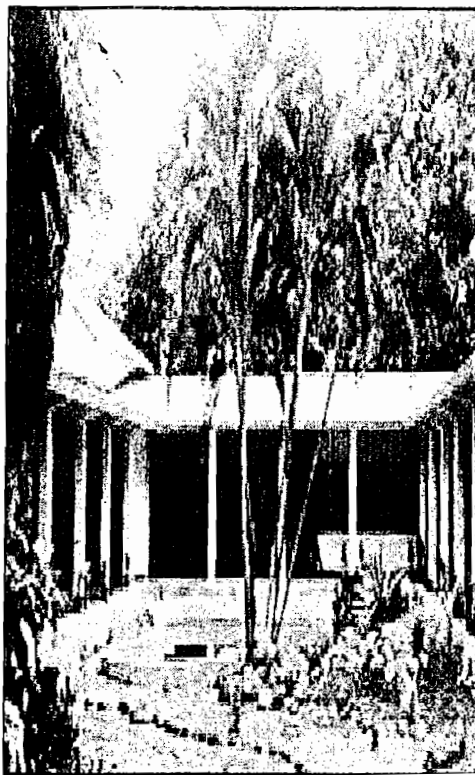
**KFRI CD 1.1**

**Scientific Papers (21-1100, 1980-2005) & Research Reports (201-250; 2001-2003)**

This CD-ROM is a compilation of Scientific Papers of KFRI Scientists published during 1980 - 2005 and 50 Research Reports of KFRI brought out during 2001-2003. Full text of each Scientific Paper and Research Report is provided which can be browsed or searched using keywords

This CD is the out come of the project,  
**KFRM451\04: Digitisation of KFRI Scientific Papers and Research Reports 201 to 250**

**Principal Investigator: K. Sankara Pillai**  
**Associate: K.F. George**



**Kerala Forest Research Institute**

(An institution of State Council for Science, Technology and Environment)  
 Peechi 680 653, Thrissur, Kerala, India  
 2007





MFN ??? [Navigation icons] [Options]

Worksheet: **KFRI** Add field: <>

Title  
 Author  
 Year  
 Source  
 Series  
 Category  
 Text  
 All

**Data Base Definition - Field Table (KFRI)**

Tag:	Name:	Type:	Rep:	Pattern/Subfields:
1		Alphanumeric		
10	Title	Alphanumeric	-	
20	Author	Alphanumeric	R	
30	Year	Alphanumeric	-	
40	Source	Alphanumeric	-	
60	Series	Alphanumeric	-	
90	Category	Alphanumeric	-	
110	Text	Alphanumeric	-	
120	All	Alphanumeric	-	

Save  
 Clear Entry  
 Sort Fields  
 Delete Entry

Step 1. Field Definition  
 Define the structure of your data base by entering tag fields, descriptors, types and patterns.

Cancel Help Ok

NEW RECORD 0 bytes



MFN 1 [Navigation icons] [Options]

Worksheet: Kfri Add field: <>

Ecological and economic benefits of tree components in homestead farming systems of Kerala

Title	Ecological and economic benefits of tree components in homestead farming systems of Kerala
Author	1 Chandrashekhara, U.M
Year	1995
Source	Pillai, P.P., Nair, R.P. (Eds.). Understanding Ecologically Sustainable Economic Development:104-108
Series	KFRI Scientific Paper 24
Category	SP
Text	SP021.pdf
All	All

	96 bytes
--	----------



MFN 1 [Navigation icons] [Options]

Worksheet: Kfri Add field: <>

Ecological and economic benefits of tree components in homestead farming systems of Kerala

Title	Ecological and economic benefits of tree components in homestead farming systems of Kerala
Author	1 Chandrashekara, U.M
Year	1995
Source	Pillai, P.P., Nair, R.P. (Eds.). Understanding Ecologically Sustainable Economic Development:104-108
Series	KFRI Scientific Paper 24
Category	SP
Text	SP021.pdf
All	All

	96 bytes
--	----------

# Research Reports

## Plantation Forestry

1. Balagopalan, M. 2003. Improvement of productivity of eucalypts through fertilizer inputs and silvicultural treatment. KFRI Research Report 250: 29p
2. Balagopalan, M; Chacko, K.C. 2001. Growth of teak in successive rotations in relation to soil conditions. KFRI Research Report 201: 26p
3. Induchoodan, N.C. 2002. Management strategies for promoting succession in plantations of Parambikulam and Wayanad Wildlife Sanctuary. KFRI Research Report 236: 89p
4. Jayaraman, K. 2002. Stand dynamics of selected forest plantation species of Kerala. KFRI Research Report 233: 26p
5. Nair, K.K.N. 2002. Plantation technology for eight selected indigenous tree species of Kerala State. KFRI Research Report 231: 110p
6. Nair, K.S.S; Varma, R.V; Sudheendrakumar, V.V; Mohandas, K; Sajeev, T.V. 2001. Use of baculovirus control agents within an integrated pest management strategy against teak defoliator, *Hyblaea puerà*, in India. KFRI Research Report 203: 51p
7. Pandalai, R.C. 2002. Underplanting rattans in rubber plantations. KFRI Research Report 245: 18p
8. Renuka, C. 2001. Maintenance of seed stands and species trial plots of rattans. Phase I. KFRI Research Report 222: 20p
9. Sharma, J.K; Balasundaran, M; Florence, E.J.M. 2001. Establishment of a semi-permanent field clonal propagation unit for Eucalyptus. KFRI Research Report 204: 19p
10. Sudheendrakumar, V.V; Sajeev, T.V; Varma, R.V. 2001. Teak defoliator management by controlling epicentre populations - a case study. KFRI Research Report 219: 31p
11. Varma, R.V. 2001. Termite control in clonally propagated root trainer raised planting stock. KFRI Research Report 215: 41p

## Natural Forests

12. Chandrasekhara, U M. 2002. Stand structural diversity and dynamics in natural forests of Kerala. KFRI Research Report 232: 132

## Wildlife Biology

13. Easa, P.S. 2001. Ecological studies on sloth bear in Parambikulam Wildlife Sanctuary. KFRI Research Report 209: 24p

14. Easa, P.S. 2001. Elephant population in Periyar and adjacent areas - a demographic study. KFRI Research Report 212: 14p
15. Easa, P.S. 2002. Habitual suitability index model for Nilgiri Thar in Eravikulam National Park. KFRI Research Report 242: 42p
16. Jayson, E.A. 2002. Ecology of wetland birds in the Kole lands of Kerala. KFRI Research Report 244: 102p
17. Jayson, E.A. 2002. Evaluation of problems of captive/natural population of crocodile in Neyyar Wildlife Sanctuary and suggestions for their management with special emphasis on reduction of human-animal conflict. KFRI Research Report 237: 95p
18. Kerala Forest Research Institute. 2001. Survey of small mammals in Kerala with special reference to endangered species and wildlife census in Chinnar Wildlife Sanctuary. KFRI Research Report 207: 34p
19. Mathew, G. 2001. Conservation of invertebrates through captive breeding: A study with reference to butterflies. KFRI Research Report 220: 74p
20. Mathew, G; Mohanadas, K. 2001. Insect fauna of the Shola forests of Munnar and Wynad. KFRI Research Report 206: 42p
21. Ramachandran, K.K. 2002. Adequacies of mineral and salts and water mapping in Eravikulam National Park and Wayanad and Aralam Wildlife Sanctuary and suggestions for management. KFRI Research Report 241: 104p

## Medicinal Plants & Tissue Culture

22. Muraleedharan, E.M. 2001. Micropropagation of important, rare and endangered tree species of Western Ghats. KFRI Research Report 211: 25p

## General, Environmental & Fundamental Studies

23. Balagopalan, M. 2002. Ecosystem dynamics in relation to fire in different forest types. KFRI Research Report 235: 73p
24. Balasundaran, M. Identification of promising provenances of new fast growing species and development of eucalypt and acacia clones for establishment of Clonal multiplication area. KFRI Research Report 230: 44p
25. Bhat, K.V. 2001. Anatomical changes associated with culm maturation in *Bambusa bambos* (L.) Voss and *Dendrocalamus strictus* Nees. KFRI Research Report 216: 18p
26. Chacko, K.C. 2002. Standardisation of root trainer technology for *Tectona grandis*, *Eucalyptus tereticornis*, *Eucalyptus grandis*, *Eucalyptus globulus*, *Eucalyptus camaldulensis*, *Acacia auriculiformis*, *Acacia mangium* and *Paraserianthes falcataria*. KFRI Research Report 229: 294p
27. Chacko, K.C. 2002. Studies on forest seeds of Kerala. KFRI Research Report 243

28. Chacko, K.C; Pandalai, R.C; Sankar, S; Chandrasekhara Pillai, P.K. 2001. Establishment of greenbelt around Cochin Refineries Ltd. KFRI Research Report 217: 36p
29. Kallarackal, J.; Soman, C.K. 2002. Ecophysiology of a host-parasite relationship in teak. KFRI Research Report 228: 31p
30. Menon, A.R.R. 2001. Vegetation mapping and analysis of Neyyar Wildlife Sanctuary using remote sensing. KFRI Research Report 208: 45p
31. Menon, A.R.R. 2001. Fire related ecosystem dynamics of the moist-deciduous forest of the Western Ghats. KFRI Research Report 223: 69p
32. Menon, A.R.R. 2002. Forest atlas of Kerala - Phase I. Standardization of range maps. KFRI Research Report 227: 65p
33. Mohammed Kunhi, K.V. 2002. Environment impact assessment of pilgrimage in Agasthyamalai region. KFRI Research Report 238: 50p
34. Mohanadas, K; Indira, E.P. 2002. Pollination ecology of teak in Kerala. KFRI Research Report 225: 36p
35. Mohanan, C. 2001. Biological control of damping-off in forest nurseries in Kerala. KFRI Research Report 214: 62p
36. Nair P.V. 2001. Biodiversity mapping of Shola forests through remote sensing and GIS techniques. KFRI Research Report 218: 47p
37. Nair, P.V; Menon, A.R.R; Krishnankutty, C.N. 2001. Survey and estimation of bamboo resources of Kerala. KFRI Research Report 221: 59p
38. Sankar, S; Chandrasekhara, U.M. 2002. Development and testing of sustainable agroforestry models in different agroclimatic zones of Kerala with emphasis on sociocultural, economic, technical and institutional factors affecting the sector. KFRI Research Report 234: 84p
39. Sasidharan, N. 2002. Floristic studies in Parambikulam Wildlife Sanctuary. KFRI Research Report 246: 408p
40. Sharma, J.K; Nair, K.K.N; Mathew, G; Ramachandran, K.K; Jayson, E.A; Mohandas, K; Nandakumar, U.N; Vijayakumaran Nair, P. 2002. New Amarambalam reserved forests of Nilgiri Biosphere Reserve. KFRI Research Report 247: 230p
41. Sujatha, M.P. 2001. Prospects of reed bamboo (*Ochlandra travancorica*) for soil conservation in degraded sites. KFRI Research Report 226: 28
42. Sujatha, M.P. 2002. Diagnosis of micronutrient deficiencies in teak seedlings. KFRI Research Report 249: 30p
43. Thomas, T.P; Sankar, S. 2001. Role of Shola forests in maintaining water courses in the high ranges of the Western Ghats of Kerala. KFRI Research Report 205: 31p

## **Socio Economics**

44. Anitha, V. 2002. Study on social and economic dependencies of the local communities on protected areas - a case of Peechi-Vazhani and Chimmoy Wildlife Sanctuaries. KFRI Research Report 240: 94p
45. Mammen Chundamannil. 2002. Development of visitors management strategy for Parambikulam National Park, Eravikulam National Park, Neyyar Wildlife Sanctuary. KFRI Research Report 239: 87p
46. Mammen Chundamannil. 2001. Economics of forest plantations in Kerala. KFRI Research Report 210: 50p

## Scientific Papers

1. Abdul Kader, S; Bindu, K.R; Chacko, K.C. 1999. Occurrence of mono and polyembryonic albino seedlings in *Artocarpus hirsuta*, HK.F.
2. Abdul Kader, S; Bindhu, K.R.; Chacko, K.C. 2000. Polyembryony in *Syzygium cumini* (L.) Skeels and in *Vateria indica* L.
3. Abdual Kader, S; Chacko, K.C. 2001. Seed characteristics and germination of portia tree (*Thespesia populnea* (Linn.) Soland ex *Correa*).
4. Abdul Kader, S; Preethi,M; Ravendran, V.P.; Seethalakshmi, K.K. 2001. Albino seedlings in bamboo (*Ochlandra travancorica* (Bedd.) Benth. ex Gamble).
5. Abdul Kader, S.; Seethalakshmi, K.K. 2001. Abnormal seedlings in *Swietenia macrophylla* King.
6. Abdual Kader, S; Seethalakshmi, K.K. 2000. A note on albino seedlings in *Azadirachta indica* A. Juss.
7. Abdul Kader, S; Seethalakshmi, K.K. 1999. A note on twin seedling in *Thespesia populnea* (L.) Soland ex *Correa*.
8. Abdul Kader, S; Seethalakshmi, K.K. 2000. A typical seedlings in *Hopea parviflora*, Bedd.
9. Abdul Kader, K.K; Seethalakshmi, K.K.; Chacko, K.C. 2001. Rapid viability tests for fresh and stored seeds of Mahogany (*Swietenia macrophylla*, King).
10. Abdul Kader, S; Seethalakshmi, K.K; Chandrasekhara Pillai, P.K. 2000. Seed characteristics and germination of *Vitex leucoxydon* L.
11. Abdual Kader, S; Seethalakshmi, K.K; Mohanadas, K. 2005. Studies on floral biology and seed development of *Swietenia macrophylla* king.
12. Abhilash, E.S; Menon, A.R.R; Balasubramanian, K. 2005. Regeneration status in natural habitats of *Nageia wallichiana* (Presl.) O.Ktz, Goodrical reserved forest of Western Ghats of India.
13. Alexander, T.G. 1987. Taungya and soil management during the establishment phase of forest plantations in Kerala, India.
14. Alexander, T.G; Balagopalan, M; Thomas, T.P; Mary, M.V; Sankar, S. 1986. Soils in relation to anthropic disturbances: A case study in the western half of Attappady in Kerala.
15. Ancy Mathew; Bhat, K.M. 1997. Anatomical diversity of Indian rattan palms (Calamoideae) in relation to biogeography and systematics.
16. Anitha, V. 1998. Investment decision: Benefit-cost analysis.
17. Anitha, V; Muraleedharan, P.K; Binilkumar, A.S. 2003. Natural resources of depletion in protected areas: Socio-economic linkages.
18. Anitha, V; Muraleedharan, P.K; Binilkumar, A.S. 2004. Human dimensions in protected area management: Tracing synergies of conservation and livelihood.



19. Anjana Shankar; Muraleedharan, P.K. 1996. Marketing of non-timber forest products in Kerala: An overview.
20. Anto, P.V.; Renuka, C.; Sreekumar, V.B. 2001. *Calamus shendurunii*, a new species of Areaceae from Kerala, India.
21. Arun, L.K; Shaji, C.P; Easa, P.S. 1996. A record of new fishes from Periyar Tiger Reserve.
22. Balagopalan, M. 1995. Changes in the distribution of organic carbon and different forms of nitrogen in soils under natural forest and teak plantations.
23. Balagopalan, M. 1994. Comparative study on the soil organic matter contents and their fractions in an *Albizia* plantation and adjacent natural forest in Kerala.
24. Balagopalan, M. 1994. Comparison of some physicochemical properties of soils of varying age plantations of *Eucalyptus tereticornis* in Kerala.
25. Balagopalan, M. 1997. Effect of lime on the growth of *Eucalyptus grandis* and *Swietenia macrophylla* seedlings.
26. Balagopalan, M. 1981. Effect of lime on the growth of *Eucalyptus grandis* seedlings.
27. Balagopalan, M. 1995. Effect of differences in forest cover on the variation in soil properties in Kerala.
28. Balagopalan, M. 1987. Effects of fire on soil properties in different forest ecosystems of Kulamav, Kerala, India.
29. Balagopalan, M. 1992. Impact of fire on soil nutrient status in different forest ecosystems of Kulamav, Kerala.
30. Balagopalan, M. 1992. Impact on soils of growing eucalypts in Kerala.
31. Balagopalan, M. 1987. Implications of management on the properties of plantation soils of Trichur Forest Division, Kerala.
32. Balagopalan, M. 1994. Soil characteristics in natural forests and *Tectona grandis* and *Anacardium occidentale* plantations in Kerala, India.
33. Balagopalan, M. 1989. Physical and chemical properties of soils in eucalypt and teak plantations of Trivandrum Forest Division.
34. Balagopalan, M. 1994. Proximate constituents of soil organic matter in relation to elevation in the red ferrallitic soils of Kerala, India.
35. Balagopalan, M. 1991. Properties of soils in *Albizia falcataria* plantations in Kerala.
36. Balagopalan, M. 1989. Properties of soils in the natural forests of Trivandrum Forest Division.
37. Balagopalan, M. 1986. Soil properties in selected teak and eucalypt plantations of Trichur Forest Division, Kerala.
38. Balagopalan, M. 1997. Variation in soil properties associated with different plant communities in the wet evergreen forests of Silent Valley and Attappadi, Kerala.

39. Balagopalan, M. et al. 2001. Problems and prospects of management of teak plantations in Kerala.
40. Balagopalan, M; Alexander, T.G. 1984. Soil organic carbon distribution along a transect through teak, eucalypt and albizia plantations in Kerala.
41. Balagopalan, M; Alexander, T.G. 1985. Soil organic carbon distribution along transects in teak and eucalypt plantations.
42. Balagopalan, M; Alexander, T.G. 1981. Shoot and root growth in *Eucalyptus tereticornis* seedlings.
43. Balagopalan, M; Jose, A.I. 1993. A comparative study on the properties of soils in relation to vegetational types.
44. Balagopalan, M; Jose, A.I. 1997. A comparison of the effectiveness of various extractants for organic matter fractionation of red ferrallitic soils of Kerala, India.
45. Balagopalan, M; Jose, A.I. 1983. Changes in organic carbon and different forms of nitrogen under first and second rotation (coppiced) eucalypt plantations.
46. Balagopalan, M; Jose, A.I. 1994. Characteristics of humic and fulvic acids from tropical and subtropical forest soils of Kerala, India.
47. Balagopalan, M; Jose, A.I. 1986. Distribution of organic carbon and different forms of nitrogen in a natural forest and adjacent eucalypt plantation at Arippa, Kerala.
48. Balagopalan, M; Jose, A.I. 1982. Dynamics of organic carbon and different forms of nitrogen under first and second rotation teak plantations of Kerala.
49. Balagopalan, M; Jose, A.I. 1994. Distribution of organic carbon, nitrogen, organic phosphorus and organic sulphur in the tropical and subtropical forest soils and their inter-relationships.
50. Balagopalan, M; Jose, A.I. 1997. Effect of tree species on soil properties along a transect through teak, eucalypt and rubber in Kerala.
51. Balagopalan, M; Jose, A.I. 1997. Effect of tree species on soil properties along a transect through teak, eucalypt and rubber in Kerala.
52. Balagopalan, M; Jose, A.I. 1995. Soil chemical characteristics in a natural forest and adjacent exotic plantations in Kerala.
53. Balagopalan, M; Jose, A.I. 1993. Soil humic fractions of red ferrallitic soils as influenced by vegetational types.
54. Balagopalan, M; Jose, A.I. 1982. Distribution of organic carbon and forms of nitrogen in soil under mahogany and teak.
55. Balagopalan, M; Jose, A.I. 1995. Altitudinal effect on tropical and subtropical forest soils in Kerala, India.
56. Balagopalan, M; Jose, A.I; Seethalakshmi, K.K. 1994. Integrated management of organic matter, nitrogen, phosphorus and potassium for rice.

57. Balagopalan, M; Rugmini, P. 1989. Soil characteristics along a transect as influenced by teak plantations in Kerala, India.
58. Balagopalan, M; Rugmini, P. 2000. Variation in soil properties associated with high elevational grasslands in the Western Ghats, Kerala.
59. Balagopalan, M; Sankar, S. 1993. Ecological conditions of rattan (cane) growing areas with special reference to soil properties.
60. Balagopalan, M; Seethalakshmi, K.K. 1997. Physical and chemical properties of red ferrallitic soils as modified by *Gliricidia sepium* leaf litter in Kerala, India.
61. Balagopalan, M; Thomas, T.P; Mary, M.V; Sankar, S; Alexander, T.G. 1992. Soil properties in teak, bombax and eucalypt plantations of Trichur Forest Division, Kerala.
62. Balakrishnan, M; Easa, P.S. 1986. Habitat preferences of the larger mammals in the Parambikulam
63. Wildlife sanctuary, Kerala, India.
64. Balakrishnan, M; Easa, P.S. 1982. Strategies for management of forests and wildlife in Kerala.
65. Balasundaran, M. 1999. Identification of spike disease resistant sandal trees and their clonal multiplication.
66. Balasundaran, M. 1996. Impact of mistletoe infestation on growth and survival of teak.
67. Balasundaran, M. 1997. Disease management in clonal nursery and plantations of Eucalyptus.
68. Balasundaran, M; Florence, E.J.M; Sharma, J.K. 1995. Field screening of Australian provenances of eucalypts against *cylindrocladium* leaf blight and pink disease.
69. Balasundaran, M; Ghosh, S.K. 1986. Mistletoe problem of trees in India.
70. Balasundaran, M; Gnanaharan, R. 1985. Natural decay resistance of *Vitex altissima* Linn, F.
71. Balasundaran, M; Gnanaharan, R. 1990. Laboratory evaluation of preservative treated rubberwood against fungi.
72. Balasundaran, M; Gnanaharan, R. 1997. Timber defects of plantation grown teak and their implication of wood quality.
73. Balasundaran, M; Gnanaharan, R. 1990. Laboratory evaluation of decay resistance of rubber wood.
74. Balasundaran, M; Gnanaharan, R. 1986. Decay resistance of two wood species belonging to Dipterocarpaceae.
75. Balasundaran, M; Mohamed Ali, M.I. 1988. Effect of soil pH and Rhizobium strain on seedling growth and nodulation in *Leucaena leucocephala*.
76. Balasundaran, M; Mohamed Ali, M.I. 1997. Mistletoe problem of teak and its control measures.

77. Balasundaran, M; Mohamed Ali, M.I; Ghosh, S.K. 1988. Little leaf disease of Eucalyptus.
78. Balasundaran, M; Mohamed Ali, M.I; Ghosh, S.K; Sunderaraman, V. 1988. Presence of sandal spike MLO in the insect vector, *Redarator bimaculatus* and in plants fed with the vector.
79. Balasundaran, M; Nazma; Gnanaharan, R. 1985. Wood of *Mesua nagassarium* (Burm. f.) Kosterm - its natural resistance to decay fungi.
80. Balasundaran, M; Sankaran, K.V. 1991. *Fusarium solani* associated with stem canker and die-back of teak in Southern India.
81. Balasundaran, M; Sharma, J.K; Florence, E.J.M; Mohanan, C. 1995. Leaf spot diseases of teak and their impact on seedling production in nurseries.
82. Balasundaran, M; Thomas, T.P; Sujatha, M.P; Sankaran, K.V. 2000. Effect of soil properties on status of root nodulation of *Acacia Auriculiformis* in acidic soils.
83. Balasundaran, M; Varma, R.V. 1991. Inflorescence blight and shoot die-back of cashew.
84. Benny, A.G; Bhat, K.M. 1997. Circumfrential variation in pulpwood quality attributes in two species of eucalypts selected for disease resistance and higher productivity in Kerala.
85. Benny, A.G; Bhat, K.M. 1996. Strength properties of Eucalyptus grandis grown in low and high altitudinal localities in Kerala.
86. Benny, A.G; Bhat, K.M. 1994. Strength properties of *Eucalyptus tereticornis* grown in wet and dry localities of Kerala.
87. Bhat, K.M. 1991. A decade of wood quality and anatomical research at Kerala Forest Research Institute, Peechi.
88. Bhat, K.M. 1995. A note on heartwood proportion and wood density of 8-year-old teak.
89. Bhat, K.M. 1983. A note on aggregate rays of *Betula* spp.
90. Bhat, K.M. 1983. A review of wood anatomy and selected properties of stems, branches and roots of birch species.
91. Bhat, K.M. 1997. Wood properties and utilisation of Indian *Albizia* species: An assessment in the context of species selection for planting.
92. Bhat, K.M. 1998. Properties and utilisation of small timber resource of teak plantations.
93. Bhat, K.M. 1986. Can plantation-grown eucalypts meet the wood quality requirement of the industries?
94. Bhat, K.M. 1986. Effect of agroforestry practices on wood quality.
95. Bhat, K.M. 1994. Wood diversity in Indian *Dalbergia* species: Implications for utilization and genetic improvement.
96. Bhat, K.M. 1999. Is fast grown teak inferior in wood quality - An appraisal of wood figure (colour, grain, texture) from plantations of high input management.

97. Bhat, K.M. 1999. Is fast grown teak inferior in wood quality? - An appraisal from plantations of low input management.
98. Bhat, K.M. 1999. Is fast grown teak inferior in wood quality? - An appraisal from plantations of high input management.
99. Bhat, K.M. 1997. Managing teak plantations for super-quality timber.
100. Bhat, K.M. 1999. Need for technology transfer to producer countries for processing small dimensional timbers of teak plantations.
101. Bhat, K.M. 1992. Classification of canes (rattans) according to properties and potential end-uses.
102. Bhat, K.M. 2000. Timber quality of teak from managed tropical plantations with special reference to Indian plantations.
103. Bhat, K.M. 1990. Wood quality improvement of eucalypts in India: An assessment of property-variations.
104. Bhat, K.M. 1998. Properties of fast-grown teak wood: Impact on end-user's requirements.
105. Bhat, K.M. 1985. Properties of selected less-known tropical hardwood.
106. Bhat, K.M. 1996. Other timbers.
107. Bhat, K.M. 2001. Breeding for improved wood quality of teak.
108. Bhat, K.M.; Florence, E.J.M. 2003. Natural decay resistance of juvenile teak wood grown in high input plantations.
109. Bhat, K.M.; Priya, P.B.; Rugmini, P. 2001. Characterisation of juvenile wood in teak.
110. Bhat, K.M; Ancy Mathew. 1997. Structure-property relationships and mechanical failures in rattan.
111. Bhat, K.M; Ancy Mathew. 1995. Structural basis of rattan biomechanics.
112. Bhat, K.M; Benny, A.G. 1995. Improving fibre yield and quality of eucalypts in India: Problems and prospects.
113. Bhat, K.M; Bhat, K.V. 1984. Wood properties of 1-year-old *Eucalyptus tereticornis* Sm.
114. Bhat, K.M; Bhat, K.V; Dhamodaran, T.K. 1987. A note on specific gravity difference between dominant and suppressed trees in teak (*Tectona grandis* Linn. f.).
115. Bhat, K.M; Bhat, K.V; Dhamodaran, T.K. 1990. Wood density and fibre length of *Eucalyptus grandis* grown in Kerala, India.
116. Bhat, K.M; Bhat, K.V; Dhamodaran, T.K. 1986. Thickness and percentage of bark in some timbers grown in Kerala.
117. Bhat, K.M; Bhat, K.V; Dhamodaran, T.K. 1986. Tropical hardwood branches as raw material for reconstituted wood products.

118. Bhat, K.M; Bhat, K.V; Dhamodaran, T.K. 1988. Effect of tree age on heartwood proportion of *Eucalyptus grandis* grown in Kerala.
119. Bhat, K.M; Bhat, K.V; Dhamodaran, T.K. 1990. Wood specific gravity in stem and branches of eleven timbers from Kerala.
120. Bhat, K.M; Bhat, K.V; Dhamodaran, T.K. 1989. Fibre length variation in stem and branches of eleven tropical hardwoods.
121. Bhat, K.M; Bhat, K.V; Dhamodaran, T.K. 1990. Bark specific gravity in stem and branches of nine Indian timbers grown in Kerala.
122. Bhat, K.M; Bhat, K.V; Dhamodaran, T.K. 1989. Radial patterns of density variation in eleven tropical Indian hardwoods.
123. Bhat, K.M; Bhat, K.V; Dhamodaran, T.K; Rugmini, P. 1984. Some wood and bark properties of *Hevea brasiliensis*
124. Bhat, K.M; Bhat, K.V; Dhamodaran, T.K; Rugmini, P; Sudo, S. 1984. Long-fibred raw material from tropical hardwood: *Dillenia pentagyna* Roxb.
125. Bhat, K.M; Bhat, K.V; Rugmini, P. 1983. Variation in wood and bark properties of cashew.
126. Bhat, K.M; Danbury, David; Chaturvedi, Amarnath; Joshi, R.B; Joshi, M.R; Kamaluddin, M; Kamala, B.S; Kanel, Keshav. 1994. Wood production and use.
127. Bhat, K.M; Dhamodaran, T.K. 1994. Cane (rattan) furniture manufacturing in India.
128. Bhat, K.M; Dhamodaran, T.K. 1993. Rattan harvesting and processing technology in India: Present and future.
129. Bhat, K.M; Dhamodaran, T.K; Bhat, K.V; Thulasidas, P.K. 1987. Wood property variation of 3-year-old trees among four eucalypt species grown in Kerala.
130. Bhat, K.M; Indira, E.P. 2005. Heritability and genetic gains in wood quality attributes of clonal teak (*Tectona grandis* L.F.).
131. Bhat, K.M; Indira, E.P; Zhang, S.Y; Gosselin, R; Chauret, G. 1997. Specific gravity as selection criterion of genetic improvement of teak wood quality: Tree breeder's perspective.
132. Bhat, K.M; Liese, W. 1990. Distribution pattern of metaxylem vessels in rattan palms (*Calamus* spp.).
133. Bhat, K.M; Liese, W; Schmitt, U. 1990. Structural variability of vascular bundles and cell wall in rattan stem.
134. Bhat, K.M; Mathew, A; Kabeer, I. 1996. Physical and mechanical properties of rattans of Andaman and Nicobar Islands (India).
135. Bhat, K.M; Muraleedharan, P.K. 1990. Small scale rattan-based industries of South India.
136. Bhat, K.M; Muraleedharan, P.K. 1992. Present sawmilling technology in Kerala and the factors influencing lumber recovery.
137. Bhat, K.M; Nasser, K.M.M; Thulasidas, P.K. 1993. Anatomy and identification of South Indian rattans (*Calamus* species).

138. Bhat, K.M; Priya, P.B. 2004. Influence of provenance variation on wood properties of teak from the Western Ghat region in India.
139. Bhat, K.M; Priya, P.B; Ancy Mathew. 2000. Wood biomechanics of fast grown juvenile teak (*Tectona grandis* L.f.).
140. Bhat, K.M; Renuka, C. 1986. Variation in physical characteristics of Kerala grown rattans of Peninsular India.
141. Bhat, K.M; Renuka, C; Seethalakshmi, K.K; Muraleedharan, P.K; Mohanan, C. 1987. Management and utilization of rattan resources in India.
142. Bhat, K.M; Renuka, C; Thulasidas, P.K. 1988. Occurrence of multiple perforation plate in the vessel elements of *Calamus* (Lepidocaryoideae).
143. Bhat, K.M; Thulasidas, P.K. 1997. Physical and mechanical properties of *Eucalyptus grandis* and *E. tereticornis* grown in Kerala.
144. Bhat, K.M; Thulasidas, P.K. 1989. *Calamus metzianus* Schlecht - why this rattan breaks.
145. Bhat, K.M; Thulasidas, P.K; Easa, P.S. 1989. Bark fibre length of some Indian tropical trees.
146. Bhat, K.M; Thulasidas, P.K; Mohamed, C.P. 1992. Strength properties of ten South Indian canes.
147. Bhat, K.M; Verghese, M. 1991. Anatomical basis for density and shrinkage behaviour of rattan stem.
148. Bhat, K.M; Verghese, M. 1989. Anatomical basis for the physical behaviour of rattans. IAWA Bull. 10(3):334-335.
149. Bhat, K.V; Bhat, K.M. 1983. Anatomical changes associated with interlocked grain in *Anacardium occidentale* L.
150. Bhat, K.V; Bhat, K.M. 1984. Wavy grain in *Grewia tiliifolia* Vahl.
151. Bhat, K.V; Surendran, T; Swarupanandan, K. 1986. Anatomy of branch abscission in *Lagerstroemia microcarpa* Wight.
152. Binkley, D; O'Connell, A.M; Sankaran, K.V. 1997. Stand development and productivity.
153. Binod, P; Kallarackal, J. 2000. Urbanisation - Are we doing it the right way?
154. Binoy, C.F.; Mathew, G.; Sudheendrakumar, V.V.; Narendran, T.C. 1999. Macrohymenopteran fauna of the Silent Valley National Park, Kerala, India.
155. Binoy, C.F; Mathew, G. 1998. Occurrence of *Gaeana atkinsoni* Distant (Homoptera: Cicadidae) in the Silent Valley National Park, Kerala, India.
156. Binoy, C.F; Mathew, G. 2000. *Drypetes oblongifolia* (Bedd.) Airy Shaw: A new host record for the plain puffin, *Appias indra shiva* Swinhoe (Lepidoptera: Pieridae) from Western Ghats, India.

157. Binoy, C.F; Mathew, G.; Sudheendrakumar, V.V; Narendran, T.C. 1999. Macrohymenoptera fauna of the Silent Valley National Park, Kerala, India.
158. Bruce, A; Wheatley, R.E; Humphris, S.N; Hackett, C.A; Florence, E.J.M. Production of volatile organic compounds by *Trichoderma* in media containing different amino acids and their effect on selected wood decay fungi.
159. Chacko, K.C. 1997. Flowering, fruiting and seed characteristics of *Asparagus racemosus*.
160. Chacko, K.C. 1983. Polyurethane foam sheet as a substratum for germination tests.
161. Chacko, K.C. 1986. Problems of forest management in windy areas.
162. Chacko, K.C. 1998. Silvicultural problems in management of teak plantations.
163. Chacko, K.C. 1998. Termite-aided mesocarp removal of teak (*Tectona grandis* L.F) fruits for enhanced germination and cost-effective seed handling.
164. Chacko, K.C; Chandrasekhara Pillai, P.K. 1997. Effect of pre-treatments on germination of *Asparagus racemosus* seeds.
165. Chacko, K.C; Chandrasekhara Pillai, P.K. 1995. Effect of some pre-sowing treatments on germination of *Acacia mangium* seeds.
166. Chacko, K.C; Chandrasekhara Pillai, P.K. 1997. Seed characteristics and germination of *Garcinia gummi-gutta* (L.) Robs.
167. Chacko, K.C; Chandrasekhara Pillai, P.K. 1997. Storage and hot water treatments enhance germination of Guanacaste (*Enterolobium cyclocarpum*) seeds.
168. Chacko, K.C; Jayaraman, M.S. 1990. Effect of container size on growth of *Bambusa arundinacea* seedlings.
169. Chacko, K.C; John, S.K; Asokan, A.M. 1997. Evaluation of some pre-sowing treatments for germination of teak (*Tectona grandis* Linn. f.) fruits.
170. Chacko, K.C; Kedharnath, S; Herald John, C. 2000. Incidence of phyllotaxy variants in teak, *Tectona grandis* L.F.
171. Chacko, K.C; Muhammad, E. 1986. Polyurethane foam nursery technique for raising healthy seedlings of Eucalyptus.
172. Chacko, K.C; Muhammad, E; Alexander, T.G. 1984. Effect of farmyard manure, rock phosphate and lime on growth and yield of *Leucaena leucocephala* var. K28.
173. Chacko, K.C; Sankar, S; Pandalai, R.C; Nandakumar, U.N. 1991. Effects of slash burning on soil properties, weed growth, taungya yield and growth of teak.
174. Chacko, K.C; Sudheendrakumar, V.V; Balagopalan, M. 1985. Studies on the feasibility of stump planting of *Eucalyptus tereticornis* Sm.
175. Chand Basha, S. 1993. Tree improvement work at Kerala Forest Research Institute.
176. Chand Basha, S; Kumar, M. 1994. Three little known species of *Ochlandra* Thw. (Poaceae) from Western Ghats, India.



177. Chand Basha, S; Mammen Chundamanni; Swarupanandan, K. 1992. Socioeconomic research in forest conservation.
178. Chand Basha, S; Sankar, S. 1997. Future of teak in Kerala.
179. Chand Basha, S; Sankar, S; Balasubramanyan, K. 1992. Biodiversity of Silent Valley National Park: A phytogeographical analysis.
180. Chand Basha, S; Sasidharan, N. 1994. A new species of *Polyalthia* Bl. (Annonaceae) from Peninsular India.
181. Chandrasekhar, N; Sudheendrakumar, V.V; Banerjee, M. 2003. A study on the population dynamics of the teak defoliator in Nilambur teak plantation: A novel approach using RAGEP.
182. Chandrashekhara, U.M. 1995. Ecological and economic benefits of tree components in homestead farming systems of Kerala.
183. Chandrashekhara, U.M. 1996. *Ecology of Bambusa arudinacea* (Retz.) Willd. growing in teak plantations of Kerala, India.
184. Chandrashekhara, U.M. 1993. Forest canopy gaps and cane distribution in a humid tropical forest of Kerala, India.
185. Chandrashekhara, U.M. 1998. Ramakrishnan Index of Stand Quality (RISQ): An indicator for the level of forest disturbance.
186. Chandrashekhara, U.M. 1996. Strengths and weaknesses of traditional systems of bamboo cultivation in rural Kerala.
187. Chandrasekhara, U.M.; Muraleedharan, P.K.; Sibichan, V. 2001. Distributed shola forests of Kerala and strategies for its conservation and management.
188. Chandrashekhara, U.M; Ramakrishnan, P.S. 1993. Gap phase regeneration of tree species of differing successional status in a humid tropical forest of Kerala, India.
189. Chandrashekhara, U.M; Ramakrishnan, P.S. 1993. Germinable soil seed bank dynamics during the gap phase of a humid tropical forest in the Western Ghâts of Kerala, India.
190. Chandrashekhara, U.M; Sankar, S. 1998. Ecology and management of sacred groves in Kerala, India.
191. Chandrashekhara, U.M; Sankar, S. 1999. Cropping systems of tribes of Chinnar Wildlife Sanctuary in Kerala. *Man in India*
192. Chandrashekhara, U.M; Sankar, S; Shajahan, P.K; Blowfield, M.E; Boa, E. 1997. Fencing patterns in homegardens of Kerala, India: A case study.
193. Chandrashekhara, U.M; Sathian P Joseph; Sreejith, K.A. 2002. Ecological and socio-cultural dimensions of sacred groves on Northern Kerala.
194. Chandrasekhara, U.M.; Sibichan, V; Muraleedhara, P.K. 2000. Ecological economics of non wood forest products (NWFP) species in Wynad Wildlife sanctuary.

195. Chandrasekhara, U.M; Sivaprasad, A; Nair, K.K.N.; Pandali, R.C. 2001. Establishment and growth of some medicinal tree species on two degraded lands in an agroforestry system in Kerala, India.
196. Christopher, G; Jayson, E.A. 1996. Collection and marketing of NTFPS by Kani tribals of Peppara Wildlife Sanctuary, Kerala, India.
197. Christopher, G; Jayson, E.A. 1996. Sightings of Nilgiri Marten (*Marten gwatkinsi* Horsfield) at Peppara Wildlife Sanctuary and Silent Valley National Park, Kerala, India.
198. David, B.V; Jesudasan, R.W.A; Mathew, G. 1988. Description of a new species of the genus *Aleurolobus* Quaintance & Baker (1914) (Aleyrodidae: Homoptera).
199. Dhamodaran, T.K. 1993. Lignin and silica contents of some Kerala-grown rattans.
200. Dhamodaran, T.K.; Gnanaharan, R. 2001. Optimizing the schedule for CCA impregnation treatment of rubber wood.
201. Dhamodaran, T.K.; Thulasidas, P.K.; Gnanaharan, R. 2001. Commercial scale trial of an economical schedule for CCB impregnation treatment of partially dried rubber wood: Treatability of wood from Hevea clones.
202. Dhamodaran, T.K.; Thulasidas, P.K.; Gnanaharan, R. 2000. Solar kiln for timber drying.
203. Dhamodaran, T.K; Bhat, K.M. 1993. Diffusion treatment of rattans.
204. Dhamodaran, T.K; Bhat, K.M. 1993. Preservative treatment of rattans by vacuum-pressure process.
205. Dhamodaran, T.K; Bhat, K.M. 1993. Kerosene curing of Indian rattans.
206. Dhamodaran, T.K; Chacko, K.C. 1996. *Acacia mangium* as a tropical plantation forestry species in Kerala, India.
207. Dhamodaran, T.K; Gnanaharan, R. 1994. Commercial scale trial of an economical schedule for boron impregnation treatment of green rubber wood.
208. Dhamodaran, T.K; Gnanaharan, R. 1999. Effect of under-water storage on sapstain control and strength properties of rubberwood.
209. Dhamodaran, T.K; Gnanaharan, R. 1984. Effect of immersion time on loading and distribution of boric acid in rubber wood by diffusion process.
210. Dhamodaran, T.K; Gnanaharan, R. 1998. Effect of under-water storage on the utilisation value of rubber wood. 789)
211. Dhamodaran, T.K; Gnanaharan, R. 1996. Optimum storage period for the boron diffusion treatment of rubber wood.
212. Dhamodaran, T.K; Gnanaharan, R. 1990. Upgradation of rubber wood through boron diffusion treatment. Rubber Board Bull. 25(1):12-17.
213. Dhamodaran, T.K; Gnanaharan, R. 1993. Verification of an economical schedule for boron impregnation treatment of partially dried rubber wood.

233. Florence, E.J.M; Gnanaharan, R; Sharma, J.K. 1993. Influence of moisture content of rubber wood on the growth of *Botryodiplodia theobromae*.
234. Florence, E.J.M; Sankaran, K.V. 1991. *Cylindrocladium collar* rot of *Mimusops* seedlings.
235. Florence, E.J.M; Sankaran, K.V. 1987. Seedling diseases of *Gmelina arborea* in Kerala - new records.
236. Florence, E.J.M; Sharma, J.K. 1990. *Botryodiplodia theobromae* associated with blue staining in commercially important timbers of Kerala and its possible biological control.
237. Florence, E.J.M; Sharma, J.K. 1997. Control of sapstain and mould on rubberwood using sodium azide - laboratory evaluation.
238. Florence, E.J.M; Sharma, J.K. 1987. *Corynespora asiicola*: A new leaf pathogen for *Gmelina arborea* in India.
239. Florence, E.J.M; Sharma, J.K. 2001. Effect of humidity, temperature and wood moisture content of the growth of *Botryodiplodia theobromae* on rubberwood.
240. Florence, E.J.M; Sharma, J.K; Gnanaharan, R. 1999. Analysis of chemical properties of rubber wood stained by *Botryodiplodia theobromae*.
241. Florence, E.J.M; Sharma, J.K; Gnanaharan, R. 1998. Sapstain fungi associated with softwood species in Kerala, India.
242. Florence, E.J.M; Sharma, J.K; Gnanaharan, R. 1998. Temperature tolerance of *Botryodiplodia theobromae* causing sapstain on rubber wood.
243. Florence, E.J.M; Sharma, J.K; Mohanan, C. 1986. A stem canker disease of *Eucalyptus* caused by *Cryphonectria cubensis* in Kerala.
244. Florence, E.J.M; Sharma, J.K; Sankaran, K.V; Mohanan, C. 1985. Some diseases of forest tree seedlings in India caused by *Sclerotium rolfsii* and *Rhizoctonia solani*.
245. Ghosh, S.K. 1981. Association of mycoplasma and allied pathogens with tree diseases in India.
246. Ghosh, S.K; Balasundaran, M. 1980. A simple technique for injecting chemicals into teak.
247. Ghosh, S.K; Balasundaran, M. 1991. Occurrence of spike disease of sandal in Kerala.
248. Ghosh, S.K; Balasundaran, M; Gnanaharan, R. 1981. Sandal spike diagnosis by visual observation and by electrical resistance - A preliminary study in the field.
249. Ghosh, S.K; Balasundaran, M; Mohamed Ali, M.I. 1992. Sandal spike disease.
250. Ghosh, S.K; Balasundaran, M; Mohamed Ali, M.I. 1982. Chemical control of *Dendrophthoe falcata* on teak through trunk injection: A preliminary field study.
251. Ghosh, S.K; Balasundaran, M; Mohamed Ali, M.I. 1983. Possible teak mistletoe control through trunk injection of weedicide.
252. Ghosh, S.K; Balasundaran, M; Mohamed Ali, M.I. 1988. Towards the control of mistletoe on teak through tree injection using weedicides.

253. Ghosh, S.K; Mohamed Ali, M.I; Balasundaran, M. 1984. Light and fluorescent microscopic studies on little leaf disease of eucalypts.
254. Ghosh, S.K; Mohamed Ali, M.I; Balasundaran, M. 1984. Studies on spike disease of sandal in Kerala.
255. Ghosh, S.K; Mohamed Ali, M.I; Balasundaran, M; Mathew, G. 1983. *Redarator bimaculatus*, a possible vector for sandal spike in Kerala.
256. Gigi K. Joseph; Ramachandran, K.K. 2003. Demography of lion tailed macaque (*Macaca silenus*) in an undistributed rain forest of Silent Valley National Park, Kerala, India.
257. Gigi K. Joseph; Ramachandran, K.K. 1999. Conservation and management strategies for the endemic and endangered lion-tailed macaque in Silent Valley National Park, Kerala.
258. Gigi K. Joseph; Ramachandran, K.K. 2003. Distribution and demography of the Nilgiri Langur (*Trachypithecus johnii*) in Silent Valley National Park and adjacent areas, Kerala, India.
259. Gigi K. Joseph; Ramachandran, K.K. 2001. Silent Valley National Park - An undisturbed viable abode for the endangered lion-tailed macaque (*Macaca silences*).
260. Gilchrist, K.F; McConchie, D.L; Gnanaharan, R. 1997. Physical and anatomical features of rubber wood from three cultivars..
261. Gnanaharan, R. 1995. Processing rubber wood, a timber from non-conventional source.
262. Gnanaharan, R. 1994. A need for standardization of bending test procedures for bamboo.
263. Gnanaharan, R. 1982. A simplified boron diffusion treatment for rubber wood.
264. Gnanaharan, R. 1991. Wood and environment.
265. Gnanaharan, R. 1996. Technical properties and specifications for Indian rubber wood.
266. Gnanaharan, R. 1994. Timber substitutes and their environmental implications.
267. Gnanaharan, R. 1987. Basic structure of coconut wood and its utilization potential in comparison with other standard woods.
268. Gnanaharan, R. 1984. Evaluation of an alkyl ammonium compound as a fungicide to control sapstain and mould during diffusion storage.
269. Gnanaharan, R. 1986. Eucalypts for non-pulp uses - research needs.
270. Gnanaharan, R. 1986. Anti-sapstain chemicals for diffusion treatment of rubber wood.
271. Gnanaharan, R. 1992. Bamboo research in India in the 1980's.
272. Gnanaharan, R. 1994. Biomechanical response of reed bamboo along the length of the culm and across the culm wall thickness.
273. Gnanaharan, R. 1998. Bureau of Indian Standards vis-a-vis rubberwood.
274. Gnanaharan, R. 1987. Commercial exploitation of coconut wood: Prospects.

275. Gnanaharan, R. 1994. Field evaluation of preservative treated bamboo.
276. Gnanaharan, R. 1989. Research needs in the utilization of rubber wood.
277. Gnanaharan, R. 1995. Sawn timber output from short rotation *Acacia auriculiformis*.
278. Gnanaharan, R. 1993. Shrinkage behaviour of bamboos grown in Kerala, India.
279. Gnanaharan, R. 1994. Physical and strength properties of *Dendrocalamus strictus* grown in Kerala, India.
280. Gnanaharan, R. 1998. Potential of bamboo for furniture.
281. Gnanaharan, R. 1983. Preliminary note on the fungal problem of rubber wood.
282. Gnanaharan, R. 2002. Preservative treatment of bamboo and bamboo products.
283. Gnanaharan, R. 1990. Transferring wood preservation techniques to the field.
284. Gnanaharan, R. 1994. Use of indigenous timbers in housing sector.
285. Gnanaharan, R. 1989. Utilization of rubber wood (*Hevea brasiliensis*) in India.
286. Gnanaharan, R; Balasundaran, M. 1997. Effect of mistletoe attack on teak wood.
287. Gnanaharan, R; Dave Page. 1998. An optimum schedule for treating radiata pine.
288. Gnanaharan, R; Dhamodaran, T.K. 1993. A pilot plant investigation of boron treatment of rubber wood: Arriving at an economical treatment schedule.
289. Gnanaharan, R; Dhamodaran, T.K. 1989. Effect of wilt disease and age on the strength properties of coconut palm stem wood.
290. Gnanaharan, R; Dhamodaran, T.K. 1993. Mechanical properties of rubberwood from a 35-year-old plantation in Central Kerala, India.
291. Gnanaharan, R; Dhamodaran, T.K. 1989. Preservative treatment of stem wood of wilt-diseased coconut palms.
292. Gnanaharan, R; Dhamodaran, T.K. 1985. Suitability of some tropical hardwoods for cement-bonded wood-wool board manufacture.
293. Gnanaharan, R; Dhamodaran, T.K; Thulasidas, P.K. 1986. Physical properties of stem wood of wilt-diseased and non-diseased coconut palms.
294. Gnanaharan, R; Dhamodaran, T.K; Thulasidas, P.K. 1985. Sawn timber output from wilt-diseased and non-diseased palms.
295. Gnanaharan, R; Dhamodaran, T.K; Thulasidas, P.K. 1988. Yield and quality of charcoal from coconut stem wood.
296. Gnanaharan, R; Ghosh, S.K; Balasundaran, M. 1983. Effect of mistletoe on the strength properties of *Tectona grandis* L.f.
297. Gnanaharan, R; Ghosh, S.K; Balasundaran, M; Dhamodaran, T.K. 1984. Predictors of ultimate strength of mistletoe-infested teak (*Tectona grandis* Linn. f.).

298. Gnanaharan, R; Mathew, G; Dhamodaran, T.K. 1983. Protection of rubber wood against the insect borer, *Sinoxylon anale* Les. (Coleoptera : Bostrychidae).
299. Gnanaharan, R; Mohanan, C. 1997. Ways to minimise harvest wastage of *Ochlandra travancorica*.
300. Gnanaharan, R; Mohanan, C; Chand Basha, S. 1993. Post-harvest technology for reed bamboo.
301. Gnanaharan, R; Page, Dave; Pendlebury, J. 1998. Copper-chrome-arsenate treatment of wood from two Hevea clones.
302. Gnanaharan, R; Sudheendrakumar, V.V; Nair, K.S.S. 1985. Protection of cashew wood in storage against insect borers.
303. Govindarajalu, E; Sasidharan, N. 1997. Monographia indicorum fimbristylum precursores - novelties.
304. Indira, E.P. 1998. Correlation between growth characters and juvenile mature performance in *Bambusa bambos* (L.) Voss.
305. Indira, E.P. 1996. Species selection for higher productivity in Ailanthus.
306. Indira, E.P. 1997. Improvement of bamboo for higher productivity.
307. Indira, E.P. 1997. Genetic improvement of teak in Kerala: Present status and future strategy.
308. Indira, E.P. 1993. Prospects of cane improvement for higher productivity.
309. Indira, E.P. 1988. Short note: Albino gene carriers and mating system in *Bambusa arundinacea* (Retz.) Willd.
310. Indira, E.P.; Anto, P.V. 2002. Karyotype analysis in *Calamus palustris* Griff.
311. Indira, E.P; Bhat, K.M. 1997. Variability and heritability of wood density in teak (*Tectona grandis*) L.f.
312. Indira, E.P; Bhat, K.M. 1998. Effects of site and place of origin on wood density of teak (*Tectona grandis*) clones.
313. Indira, E.P; Chand Basha, S. 1999. Effect of seeds from different sources on germination and growth in teak (*Tectona grandis* L.F.) nursery.
314. Indira, E.P; Chand Basha, S. 1993. Tree improvement efforts in Kerala.
315. Indira, E.P; Chand Basha, S; Chacko, K.C. 2000. Effect of seed size grading on the germination and growth of teak (*Tectona grandis*) seedlings.
316. Indira, E.P.; Chand Basha, S.; Chacko, K.C.; Krishnankutty C.N. 2001. Effect of different sowing methods and seed rates on germination and growth of teak seedlings
317. Indira, E.P; Koshy, M.P. 1986. A report of monohybrid ratio for albino expression in *Bambusa arundinacea* (Retz) Willd.

318. Indira, E.P.; Mohanadas, K. 2002. Intrinsic and extrinsic factors affecting pollination and fruit productivity in teak (*Tectona grandis* Linn.f.).
319. Indira, E.P.; Renuka, C. 2002. The occurrence of albinos in *Calamus hookerianus*.
320. Indira, E.P; Rugmini, P. 1997. Genetic control of seedling height and girth in *Ailanthus triphysa*.
321. Indira, E.P; Rugmini, P. 1997. Variability and heritability in *Bambusa bamboos* (L.) Voss.
322. Jayagopal, L.S; Ramaswamy, J.V; Ragupathy, R; Dhamodaran, T.K; Bhat, K.M. 1993. Testing canes for compression strength.
323. Jayaprakash, P; Vijayakumaran Nair P; Shanavas Elachola. 2000. Software for the optimisation of a rural distribution system.
324. Jayaraman, K. 1990. Modelling the growth of natural forests.
325. Jayaraman, K; Bailey, R.L. 1988. Modelling mixed species stands with Scheffe's canonical polynomials.
326. Jayaraman, K; Bailey, R.L; Rugmini, P. 1986. Height measurements of plantation-grown teak using multimeter and relascope.
327. Jayaraman, K; Krishnankutty, C.N. 1991. Yield from eucalypts plantations in Kerala.
328. Jayaraman, K; Lappi, J. 2001. Estimation of height-diameter curves through multilevel models with special reference to even-aged teak stands.
329. Jayaraman, K; Nandakumar, U.N; Rugmini, P. 1987. Estimation of stocking in teak plantations.
330. Jayaraman, K; Rugmini, P. 1988. Diameter distributions for even-aged teak.
331. Jayaraman, K; Rugmini, P. 1993. Variation in the productivity of teak plantations in Kerala.
332. Jayaraman, K; Sree Kumar, V; Sunanda, C. 1999. Yield table for *Casuarina equisetifolia*.
333. Jayaraman, K; Zakrzewski, W.T. 1996. Regression with autocorrelated errors: Application in stem-profile models.
334. Jayaraman, K; Zakrzewski, W.T. 2001. Practical approaches to calibrating height-diameter relationships for natural sugar maple stands in Ontario .
335. Jayasankar, B; Anitha, V; Muraleedharan, P.K. 1997. Economics of bamboo cultivation in homesteads agroforestry systems of Kerala.
336. Jayasankar, B; Muraleedharan, P.K. 1996. Economics of homestead production of bamboos in Kerala: Problems and prospects.
337. Jayasankar, B; Muraleedharan, P.K. 2000. Efficiency of agroforestry product markets in India: A comparative study of bamboo and wood markets.
338. Jayasankar, B; Muraleedharan, P.K. 1995. Marketing of agroforestry products: A study of marketing of bamboos in Kerala.

339. Jayasree, V.K; Renuka, C; Rugmini, P. 2003. Root development in rattans 1. A quantitative study of the roots in two species of *Calamus L.*
340. Jayasree, V.K; Renuka, C; Rugmini, P. 2004. Root development in rattans 2. Soil requirements and efficiency of the root systems of *Calamus thwaitesii* Becc. and Hook. f. *Calamus rotang L.* in the seedling stage.
341. Jayasree, V.K; Sujatha, M.P; Renuka, C. 2004. Root morphology and development in rattans. 3. Root system development in *Calamus thwaitesii* Becc. and *Calamus rotang L.* in relation to the physical properties of a degraded lateritic soil.
342. Jayson, E.A. 1994. A note on nest building behaviour of wild boar (*Sus scrofa Linnaeus*).
343. Jayson, E.A. 1990. An ecological survey at Satpura National Park, Pachmarhi and Bori Sanctuaries, Madhya Pradesh.
344. Jayson, E.A. 1998. Avifauna.
345. Jayson, E.A. 2000. Mammals and birds of the proposed nature study centre area, Malayuttur, Kerala.
346. Jayson, E.A. 2002. Avifauna in the wetlands of Kerala.
347. Jayson, E.A. 1986. Ecodevelopment of Wildlife Sanctuaries in the Western Ghats of Kerala.
348. Jayson, E.A. 1987. Faecal pellet attributes of selected ungulates.
349. Jayson, E.A. 1999. Habitat preference of five herbivores in the Chimmony wildlife sanctuary.
350. Jayson, E.A. 2004. Habitat utilisation of large herbivores in the Chinnar Wildlife Sanctuary, Kerala.
351. Jayson, E.A. 2000. Mammals and birds of the proposed nature study centre area, Malayuttur, Kerala.
352. Jayson, E.A. 1985. Mammals of Parambikulam Wildlife Sanctuary.
353. Jayson, E.A. 2000-2001. Rare and endangered mammals of Kerala.
354. Jayson, E.A. 1993. Starred tortoise, *Geochelone elegans* (schoepff) in Chinnar Wildlife Sanctuary.
355. Jayson, E.A. 1997. Status and distribution of larger mammals in Chimmony Wildlife Sanctuary.
356. Jayson, E.A. 2001. Structure, composition and conservation of birds in Mangalavanam mangroves, Cochin, Kerala.
357. Jayson, E.A. 1986. Studies on the responses of wild animals to moving vehicles.
358. Jayson, E.A; Christopher, G. 1995. Sighting of spiny dormouse, *Platacanthomys lasiurus* Blyth, 1859 in Peppara Wildlife Sanctuary, Trivandrum District, Kerala.



359. Jayson, E.A; Christopher, G. 1996. Sighting of two cat species (*Felis* sp.) from the Western Ghats, South India.
360. Jayson, E.A; Mathew, D.N. 1993. Diversity and species-abundance distribution of birds in the adjoining forests of Silent Valley National Park.
361. Jayson, E.A.; Mathew, D.N. 2000. Diversity and species - abundance distribution of birds in the tropical forests of Silent Valley, Kerala.
362. Jayson, E.A; Mathew, D.N. 1995. Roosting behaviour of common Indian Myna (*Acridotheres tristis*) at Trichur, Kerala.
363. Jayson, E.A; Mathew, D.N. 2000. Seasonal changes of tropical forest birds in the Southern Western Ghats.
364. Jayson, E.A.; Mathew D.N. 2002. Structure and composition of two bird communities in the Southern Western Ghats. No.
365. Jayson, E.A; Ramachandran, K.K. 1994. Indian black drongo, *Dicrurus adsimilis* (Bechstein) feeding on a small bird.
366. Jayson, E.A; Ramachandran, K.K. 1994. Note on the breeding period of painted bat (*Kerivoula picta*).
367. Jayson, E.A; Sivaperuman, C. 2005. Avifauna of Thrissur district, Kerala, India.
368. Jayson, E.A.; Sivaperuman, C. 2002. Seasonal variation of wetland birds in the Kole lands of Thrissur, Kerala.
369. Jeyakumar, P; Kallarackal, J. 1999. Physiological effects of water stress and certain ameliorants in tenera oil palm seedlings.
370. Jeyakumar, P; Kallarackal, J. 1994. Removing whorls - a Shimoga experiment.
371. Jomy Augustine; Sasidharan, N. 1999. Rediscovery of *Symplocos monantha* Wight (Symplocaceae) from Periyar Tiger Reserve.
372. Jomy Augustine; Sasidharan, N; Bharadwaj, A. 1994. *Ophioglossum pendulum* L. (Ophioglossaceae) from the mainland of India.
373. Jomy Augustine; Sasidharan, N; Bharadwaj, A; Rajesh, K.P. 1998. Grasses of Periyar Tiger Reserve. .
374. Jomy Augustine; Sasidharan, N; Sivadasan, M. 1999. Balsams of Periyar Tiger Reserve, Southern Western Ghats, Kerala.
375. Jose, P.A; Pandurangan, A.G; Mathew, G. 2004. Impact of insect pest incidence on natural populations of *Gluta travancoria* Bedd.: A rare and endemic tree species of the Southern Western Ghats. No. 1078)
376. Jose, P.A; Pandurangan, A.G; Mathew, G. 2004. Insect associated with population dynamics of *Ochreinauclea missionis* (Wall. ex G.Don) Ridsd - A rare and endemic tree species of the Western Ghats.
377. Joseph Thomas; Easa, P.S. 1997. *Calliophis nigrescens* (Gunther), (Serpentes: Elapidae) a colour variation from Silent Valley National Park, Kerala.

378. Joseph Thomas; Easa, P.S. 1997. Reptile fauna of Peechi-Vazani Wildlife Sanctuary.
379. Joseph Thomas; Easa, P.S. 1997. Additions to the reptile fauna of Silent Valley, Kerala.
380. Joseph Thomas; Easa, P.S; Sabu Jahas, S.A. 1998. *Mabuya allapallensis* Schmidt: A new record for Kerala.
381. Joseph Thomas; Sabu Jahas, S.A; Easa, P.S. 1997. Status and distribution of reptiles in Wayanad, Kerala.
382. Joseph, G.K; Ramachandran, K.K. 1998. Recent population trends and management of lion-tailed macaque (*Macaca silenus*) in Silent Valley National Park, Kerala, India.
383. Kallarackal, J. 1997. Eucalypts - are they bad?.
384. Kallarackal, J. 1988. From leaves to the fruits.
385. Kallarackal, J. 2000. Impact of converting natural vegetation into plantations on the watershed hydrology of the Western Ghats of Kerala.
386. Kallarackal, J. 1992. Water use of eucalypts in Kerala.
387. Kallarackal, J; Jeyakumar, P. 1996. Atmospheric drought and its physiological effects on oil palm plantations in Peninsular India.
388. Kallarackal, J; Jeyakumar, P. 1996. Oil palm in India.
389. Kallarackal, J; Somen, C.K. 1997. An ecophysiological evaluation of the suitability of *Eucalyptus grandis* for planting in the tropics.
390. Kallarackal, J; Somen, C.K. 1993. Microclimate and transpiration in relation to growth in eucalypts. Plant Physiol.
391. Kallarackal, J; Somen, C.K. 1998. Tree water consumption - an ecophysiological analysis.
392. Kallarackal, J; Somen, C.K. 1991. Trees for agroforestry.
393. Kallarackal, J; Somen, C.K. 1997. Water use by *Eucalyptus tereticornis* stands of differing density in Southern India.
394. Kedharnath, S. 1982. Genetic variation and heritability of juvenile height growth in *Eucalyptus grandis*.
395. Kedharnath, S. 1984. Forest tree improvement in India.
396. Kishorekumar, K; Chacko, K.C. 1999. Seed characteristics and germination of a shola forest tree: *Bhesa indica* (Bedd.) Ding Hou.
397. Kishorekumar, K; Kumar, M. 1997. *Sinarundinaria microphylla* (Munro) Chao & Renv. (Poaceae): A new record of a bamboo for Peninsular India.
398. Kishorekumar, K; Sasidharan, N; Swarupanandan, K. 1999. Ethnobotanical studies on the hill tribes in the shola forests of high ranges, Kerala, South India.
399. Krishnankutty, C.N. 1990. Wood resources in homesteads of Kerala.

400. Krishnankutty, C.N. 1990. Bamboo resource in the homesteads of Kerala.
401. Krishnankutty, C.N. 1988. Agroforestry systems in the homesteads of Kerala, India.
402. Krishnankutty, C.N. 1989. Long-term price trend of timber in Kerala.
403. Krishnankutty, C.N. 2000. Bamboo weaving sector in Kerala: Current status and future possibilities for rural development.
404. Krishnankutty, C.N. 2004. Benefit-cost analysis of bamboo in comparison with other crops in mixed cropping home gardens in Kerala State, India.
405. Krishnankutty, C.N. 2002. Factors influencing teak prices in Kerala.
406. Krishnankutty, C.N. 2001. Forecasting of teak prices in Kerala State, India using autoregressive integrated moving average models.
407. Krishnankutty, C.N. 2004. Marketing of bamboo (*Bambusa bambos*) in South India.
408. Krishnankutty, C.N. 2001. Rural bamboo trade in Kerala and retail markets.
409. Krishnankutty, C.N. 2001. Teak price trends in Kerala State, India.
410. Krishnankutty, C.N. 2003. Volume-weight relation of stacked bamboo and reed.
411. Krishnankutty, C.N; Blowfield, M.E. 1996. Bamboo marketing in Southern India.
412. Krishnankutty, C.N; Blowfield, M.E; Boa, E. 1995. Bamboo marketing in Kerala, India: A study for the Integrated Rural Bamboo Project.
413. Krishnankutty, C.N.; Chacko, K.C. 2000. A new criterion for estimating plantable stumps available in teak (*Tectona grandis* Linn. F.) nursery beds.
414. Krishnankutty, C.N; Chacko, K.C. 2003. Estimation of plantable stumps in teak (*Tectona grandis* Linn. F) nursery beds: A study from Kerala (India).
415. Krishnankutty, C.N; Mammen Chundamannil. 1986. Are eucalypt plantations fulfilling the goals in Kerala?.
416. Kumar, M. 1988. Reed Bamboo (*Ochlandra*) in Kerala: Distribution and management.
417. Kumar, M. 1995. A re-investigation on the taxonomy of the genus *Ochlandra* Thw. (Poaceae - Bambusoideae).
418. Kumar, M. 1991. Habitat distribution of orchids of Western Ghats and their conservation.
419. Kumar, M. 1995. Orchids of Western Ghats: Their distribution and classification.
420. Kumar, M. 1991. Rare bamboos of Western Ghats: Distribution and conservation.
421. Kumar, M. 1993. Status of bamboo taxonomy in India.
422. Kumar, M.; Ramesh, M. 2003. New species of schizostachyum (*Poaceae-bambusoideae*) from the Andaman islands, India.

423. Kumar, M.; Ramesh, M; Stephen Sequiera. 2001. Field identification key to the native bamboos of Kerala, India.
424. Kumar, M.; Remesh, M; Stephen Sequiera. 2001. *Ochlandra keralensis* (Poaceae-Bambusoideae) - A new reed-bamboo from Southern Western Ghats, India.
425. Kumar, M.; Stephen Sequiera. 2002. An enumeration of macrolichens from Palakkad district, Kerala State, India.
426. Kumar, M.; Stephen Sequiera. 1999. *Liparis walakkadensis*. a new species from Kerala.
427. Kumar, M.; Stephen Sequiera. 2001. On a collection of macrolichens from New Amarambalam Reserve forests, Southern Western Ghats, India.
428. Kumar, M.; Stephen Sequiera. 2001. Two new species of *Bulbophyllum Thouars* (Orchidaceae) from Southern Western Ghats, India.
429. Kumar, M.; Stephen Sequiera. 2001. Two new species of impatiens (Balsaminaceae) from India.
430. Kumar, M.; Stephen Sequiera; Jeffrey Wood. 2002. A new species of the hitherto monospecific genus *Xenikophyton Garay* (Orchidaceae) from India.
431. Kumar, M.; Stephen Sequiera; Ramesh, M. 2000. The position of Indian bamboos in bamboo systematics.
432. Kumar, M; Remesh, M. 2003. Medicinal pteridophytes of Kerala, South India.
433. Kumar, M; Manilal, K.S. 1992. Morphology and floral anatomy of some saprophytic orchids.
434. Kumar, M; Manilal, K.S. 1992. Floral morphology and anatomy of *Paphiopedilum insigne* and the taxonomic status of Cyrtipedioids (Orchidaceae).
435. Kumar, M; Manilal, K.S. 1986. Morphology and anatomy of *Satyrium nepalense* Don.
436. Kumar, M; Manilal, K.S. 1993. Anatomical studies and their impact on the understanding of floral morphology in orchids - a chronological review.
437. Kumar, M; Manilal, K.S. 1988. Floral anatomy of *Apostasia odorata* and the taxonomic status of Apostasioids (Orchidaceae).
438. Kumar, M; Manilal, K.S. 1994. Floral anatomy of some *spiranthoid orchids* and their taxonomic status.
439. Kumar, M; Nambiar, V.P.K; Manilal, K.S. 1984. Morphology and anatomy of *Burmannia championii* Thw.
440. Kumar, M; Ramesh, M. 2000. Diversity of bamboos in Kerala and their conservation.
441. Kumar, M; Remesh, M. 2004. Rediscovery of *Schizostachyum rogersii* Brandis - A rare, endemic and threatened bamboo from Andaman islands.
442. Kumar, M; Ramesh, M; Stephen Sequiera; Unnikrishnan, N. 2000. A little known bamboo - *Sinarundinaria microphylla* (Munro) Chao & Renv. from Southern Western Ghats, India.

443. Kumar, M; Ramesh, M; Unnikrishnan, N. 2004. A new combination in *Dendrocalamus* (Poaceae: Bambusoideae).
444. Kumar, M; Sasidharan, N. 1986. Endemic orchids of South India.
445. Kumar, M; Sasidharan, N. 1986. On the occurrence of *Dendrobium lawianum* Lindl. in Kerala.
446. Kumar, M; Sasidharan, N. 1986. Orchids of Kerala and their conservation.
447. Kumar, M; Sasidharan, N; Renuka, C. 1987. Medicinal orchids of Kerala forests.
448. Kumar, M; Seethalakshmi, K.K; Stephen Sequiera. 1999. Two new species of *Ochlandra* Thw. Poaceae - Bambusoideae from Sothern India.
449. Kumar, M; Stephen Sequiera. 2000. A new species of *Schoenorchis* (Orchidaceae) from India.
450. Kumar, M; Stephen Sequiera. 1999. Concepts in bamboo taxonomy - Past, present and future: A global perspective.
451. Kumar, M; Stephen Sequiera. 1996. Distribution of South Indian bamboos and their taxonomic status.
452. Kumar, M; Stephen Sequiera. 1998. Diversity, systematics, distribution and taxonomy of epiphytic pteridophytes of Kerala part of Western Ghats, South India.
453. Kumar, M; Stephen Sequiera. 1996. *Impatiens sivarajanii* - A new species of Balsaminaceae from Silent Valley National Park, Kerala, India.
454. Kumar, M; Stephen Sequiera. 1997. Lichen flora of Western Ghats: An appraisal.
455. Kumar, M; Stephen Sequiera. 1999. Lichen of Western Ghats - An overview.
456. Kumar, M; Stephen Sequiera. 1997. New records of macrolichens from Silent Valley, Kerala.
457. Kumar, M; Stephen Sequiera. 1999. *Oberonia josephii* (Orchidaceae) - a new record for Kerala.
458. Kumar, M; Stephen Sequiera. 1999. Observations on the epiphytic flora of Silent Valley.
459. Kumar, M; Stephen Sequiera. 1995. *Pseudoxytenanthera stocksii* (Munro) Naithani - A bamboo new record to Kerala.
460. Kumar, M; Stephen Sequiera. 1998. Some new records and little known species of ferns from Kerala, South India.
461. Kumar, M; Stephen Sequiera. 1998. Two new species of *Oberonia* Lindl. from Kerala, India.
462. Kumar, M; Stephen Sequiera; Anto, P.V. 2000. *Bulbophyllum maskeliyense* Livera (Orchidaceae) - A new record for India.

463. Kumar, M; Stephen Sequiera; Joy, C.C. 1996. Report of abnormal branching in two species of orchids from Kerala.
464. Lakshmana, A.C; Renuka, C. 1990. New species of Calamus (Arecaceae) from India.
465. Lekshmi, S; Rugmini, P; Jessy Thomas. 1998. Characteristics of defaulters in agricultural credit use: A micro level analysis with reference to Kerala.
466. Mammen Chundamannil. 1988. Forest land use policy and the conservation intent in Kerala, India.
467. Mammen Chundamannil. 1989. Utilization of forests in Kerala.
468. Mammen Chundamannil. 1990. Inter-sectoral allocation of bamboo resources: The social and economic issues.
469. Mammen Chundamannil. 1992. Sustainable use of forests: Citizen's rights for effective control.
470. Mangaly, J.K; Swarupanandan, K. 1983. Boesenbergia O. Kuntze (Zingiberaceae): New records from Kerala.
471. Manilal, K.S.; Remesh, M; Kumar, M. 2002. Ethnobotanical studies on the wild leafy vegetables used by two tribal groups of Attappady, Palakkad District, Kerala.
472. Manilal, K.S; Kumar, M. 1998. Modern trends in bamboo taxonomy.
473. Manoharan, T.R; Muraleedharan, P.K; Anitha, V. 1998. Economic valuation of non-market benefits.
474. Mary Anto; Mathew, G. 2004. Population monitoring of the Southern birdwing butterfly, *Troides minos* Cramer in the Peechi-Vazhani Wildlife Sanctuary.
475. Mascarenhas, A.F; Muralidharan, E.M. 1993. Clonal forestry with tropical hardwoods. Springer-Verlag, Berlin.
476. Mathew, G. 1981. A new report of *Pentalitomastix nacoleiae* Eady (Hymenoptera: Encyrtidae) as a polyembryonic parasite of *Parotis vertumnalis* Guen. (Lepidoptera: Pyraustidae) in Kerala, India.
477. Mathew, G. 1993. A status survey of the insect fauna of Malayattoor forests, Kerala.
478. Mathew, G. 1987. Biosystematics in Lepidoptera and its importance in forest entomological research.
479. Mathew, G. 1996. Biosystematics of insects and its application in biocontrol programmes.
480. Mathew, G. 1999. Butterflies and moths of Silent Valley National Park.
481. Mathew, G. 1987. Cossid pests of plantation crops in India and the prospects of their management.
482. Mathew, G. 1988. Cossid pests of teak in the Asian region and the possibilities of their control.

483. Mathew, G. 2002. Distribution, host range and possible management of *Indarbela quadronotata* attacking forest plantations of *Paraserianthes falcataria* in Kerala.
484. Mathew, G. 1997. Distribution, infestation progression rate and host range of the teak carpenterworm, *Alcaterogystia cadambae* Moore (Lepidoptera: Cossidae) in Kerala, India.
485. Mathew, G. 2003. Feasibility of biological control of forest insect pests - An assessment with teak defoliator management as an example.
486. Mathew, G. 1995. Field performance of some indigenous tree species with respect to insect pest incidence in Kerala (India).
487. Mathew, G. 1993. Injection and implantation of some systematic insecticides for the control of the teak carpenterworm, *Alcaterogystia cadambae* (Moore) (Lepidoptera: Cossidae).
488. Mathew, G. 1994. Insect biodiversity in tropical forests: A study with reference to butterflies and moths (Insecta: Lepidoptera) in the Silent Valley National Park (Kerala).
489. Mathew, G. 1987. Insect borers of commercially important stored timber in the State of Kerala, India.
490. Mathew, G. 1996. Insect diversity in the Nilgiri Biosphere Reserve - an overview.
491. Mathew, G. 2004. Insect diversity of India and its conservation .
492. Mathew, G. Insect pests of rubber wood in Kerala.
493. Mathew, G. 1996/97. Insects as biotic indicators to monitor changes in forest ecosystems - A study with reference to moths in the Silent Valley National Park, India.
494. Mathew, G. 1986. Insects associated with forest plantations of *Gmelina arborea* Roxb. in Kerala, India.
495. Mathew, G. 1989. Natural enemies of the bagworm, *Pteroma plagiophleps* Hampson (Lepidoptera: Psychidae) in Kerala (India).
496. Mathew, G. 1985. Natural enemies of some timber borers in Kerala and their possible role in regulating pest incidence.
497. Mathew, G. 1994. Nursery pests of selected indigenous tree species and their management in Kerala, India.
498. Mathew, G. 1980. Occurrence of *Sylepta derogata* Fb. (Lepidoptera: Pyraustidae) as a pest of Balsa (*Ochroma pyramidale*) in Kerala.
499. Mathew, G. 1984. Occurrence of an unusual type of frenulum in *Pycnarmon caberalis* Guen. (Lepidoptera: Pyraustidae).
500. Mathew, G. 1994. Pests of *Casuarina equisetifolia* and their management.
501. Mathew, G. 1985. Some Coleopteran predators associated with timber pests in Kerala (India).
502. Mathew, G. 1985. Variations in the wing venation of *Pteroma plagiophleps* Hampson (Lepidoptera: Psychidae).

503. Mathew, G; Binoy, C.F. 2003. An overview of insect diversity of Western Ghats with special reference to Kerala State.
504. Mathew, G.; Binoy, C.F. 2002. Migration of butterflies (Lepidoptera: Rhopalocera) in the New Amarambalam Reserve Forest of the Nilgiri Biosphere Reserve.
505. Mathew, G.; Florence, E.J.M.; Ananthanarayan, S. 2002. Prophylactic treatment of rubber wood for protection from pests and pathogens.
506. Mathew, G; Koshy, M.P; Mohanadas, K. 1987. Preliminary studies on insect visitors to teak (*Tectona grandis* Linn. F.) inflorescence in Kerala, India.
507. Mathew, G; Mahesh Kumar, M. 2003. State of the art knowledge on the butterflies of Nilgiri Biosphere Reserve, India. In: Conservation of Rainforests in India.
508. Mathew, G; Mary Anto; Brijesh, C.M. 2000. Butterflies of Kerala.
509. Mathew, G; Menon, M.G.R. 1985. External genitalia of some Indian pyralids (Lepidoptera).
510. Mathew, G; Menon, M.G.R. 1986. Identification of some leaf rollers belonging to the genera *Bradina*, *Marasmia* and *Cnaphalocrocis* (Lepidoptera: Pyraustidae).
511. Mathew, G; Menon, M.G.R. 1984. The pyralid fauna (Lepidoptera: Pyraloidea: Pyralidina) of Kerala (India).
512. Mathew, G; Mohamed Ali, M.I. 1987. Microbial pathogens causing mortality in the carpenterworm, *Cossus cadambae* Moore (Lepidoptera: Cossidae), a pest of teak (*Tectona grandis* Lin.f.) in Kerala (India).
513. Mathew, G; Mohanadas, K. 1989. Insects associated with some forest trees in two types of natural forests in the Western Ghats, Kerala (India).
514. Mathew, G; Nair, K.S.S. 1986. Bagworms (Lepidoptera: Psychidae) of Kerala - Their potential as pests of tree crops.
515. Mathew, G; Nair, K.S.S. 1994. Factors influencing susceptibility of stored reed (*Ochlandra travancorica* Gamble) to infestation by *Dinoderus borers* (Coleoptera: Bostrychidae).
516. Mathew, G; Nair, K.S.S. 1985. Insects associated with forest plantations of *Paraserianthes falcataria* in Kerala, India.
517. Mathew, G; Nair, K.S.S. 1990. Storage pests of bamboos in Kerala.
518. Mathew, G; Nair, K.S.S. 1983. The bagworm, *Pteroma plagiophleps* Hamp. (Lepidoptera, Psychidae) spreads to the ornamental tree, *Delonix regia* (Boj.) Rafin. in Kerala, India.
519. Mathew, G; Rahamathulla, V.K. 1995. Biodiversity in the Western Ghats - a study with reference to moths (Lepidoptera: Heterocera) in the Silent Valley National Park, India.
520. Mathew, G; Rahamathulla, V.K. 1993. Studies on the butterflies of Silent Valley National Park.
521. Mathew, G; Rashmi Chandran; Brijesh, C.M; Shamsuddin, R.S.M. 2003. Insect fauna of Shendurny Wildlife Sanctuary, Kerala.



522. Mathew, G; Rugmini, P. 1998. Control of the bark caterpillar *Indarbela quadrinotata* in forest plantations of *Paraserianthes falcataria*.
523. Mathew, G; Rugmini, P. 1996. Impact of the borer, *Alctergystia cadambae* (Moore) (Lepidoptera: Cossidae) in forest plantations of teak in Kerala, India.
524. Mathew, G; Rugmini, P; Binoy, C.F. 2000. Impact of fire on insect species diversity - A study in the Silent Valley National Park, Kerala, India.
525. Mathew, G; Rugmini, P; Jayaraman, K. 1989. Studies on spatial distribution in the teak carpenterworm, *Cossus cadambae* Moore (Lepidoptera: Cossidae).
526. Mathew, G; Rugmini, P; Mahesh Kumar, M. 2000. Impact of plantation programmes on insect species diversity - A study in the Nelliampathy forest Kerala, India.
527. Mathew, G; Seethalakshmi, K.K. 1998. A new report of *Achroia grisella* Fb. (Lepidoptera: Galleriidae) as a seed pest of bamboo reed (*Ochlandra ebracteata* Raizada & Chatterjee).
528. Mathew, G; Shamsuddin, R.S.M; Rashmi Chandran; Brijesh, C.M. 2004. Insect fauna of Peppara Wildlife Sanctuary, Kerala, India.
529. Mathew, G; Sudheendrakumar, V.V. 1992. Outbreak of *Udonga montana* (Distant) (Heteroptera: Pentatomidae) on bamboo in natural forests and adjoining plantations in Wyanad, Kerala.
530. Mathew, G; Varma, R.V. 1990. Occurrence and pest status of some insects attacking bamboos in newly established plantations in Kerala.
531. Menon, A.R.R. 1993. Cane resource mapping using remote sensing data.
532. Menon, A.R.R. 1980. Composite indices. *Acta Ecol.* 2(3/4):64-66.
533. Menon, A.R.R. 1991. Digital mapping of rubber area using IRS data.
534. Menon, A.R.R. 1982. Endangered plant species.
535. Menon, A.R.R. 1987. Forest flora and conservation.
536. Menon, A.R.R. 1983. Effect of growth regulators on *Abelmoschus esculentus* Moench by pre-soaking treatments.
537. Menon, A.R.R. 1986. Forest denudation in Kerala: A case study of Trichur Forest Division.
538. Menon, A.R.R. 1982. Impact of forest on environment.
539. Menon, A.R.R. 1989. Practical application of remote sensing in Attappady region. Kerala Forest Research Institute, Peechi.
540. Menon, A.R.R. 1991. Remote sensing application in bamboo resource evaluation - a case study in Kerala.
541. Menon, A.R.R. 1983. Tropical rain forest: Present state and future strategies.
542. Menon, A.R.R. 1985. The use of similarity index in floristic comparison: A case study of some regional Indian flora.

543. Menon, A.R.R. 1990. Utilization of remote sensing data in identifying bamboo brakes.
544. Menon, A.R.R; Chandrashekhara Pillai, P.K. 1991. Change detection study of Idukki region and endemism.
545. Menon, A.R.R; Ranganath, B.K. 1993. Vegetation mapping of the Silent Valley and its environs using IRS data.
546. Menon, A.R.R.; Varghese, A.O. 2001. Avasavyavastha(Mal.).
547. Menon, A.R.R; Varghese, A.O. 2000. Biodiversity monitoring.
548. Menon, A.R.R; Varghese, A.O. 1999. Satellite imaging - its application in plantation crops.
549. Menon, A.R.R; Varghese, A.O; Martin Lowel, K.J. 1999. Impact of fire on moist deciduous forest ecosystem of Southern Tropical forests in India.
550. Mercey, K.A.; Jayaraman, K. 2002. Effect of errors on visual assessment of distance in line transect sampling.
551. Mercey, K.A; Jayaraman, K. 1999. Predicting the variation in detection function in line transect sampling through random parameter model.
552. Milburn, J.A; Kallarackal, J. 1991. Sap exudation. John Wiley and Sons, New York.
553. Milburn, J.A; Kallarackal, J. 1989. Physiological aspects of phloem translocation.
554. Mohamed Ali, M.I; Anuratha, C.S; Sharma, J.K. 1991. Bacteria wilt of *Casuarina equisetifolia* in India.
555. Mohamed Ali, M.I; Balasundaran, M; Ghosh, S.K. 1987. Association of mycoplasma like organisms with little leaf disease of eucalypts in Kerala, India.
556. Mohamed Ali, M.I; Balasundaran, M; Ghosh, S.K. 1986. Histopathological detection of little leaf disease of eucalypts in Kerala.
557. Mohamed Ali, M.I; Balasundaran, M; Ghosh, S.K. 1987. Symptom remission in spiked sandal trees by infusion of *tetracycline antibiotics*.
558. Mohamed Ali, M.I; Florence, E.J.M. 1987. A leaf blight of teak mistletoe, *Dendrophthoe falcata* in Kerala, India.
559. Mohamed Ali, M.I; Florence, E.J.M. 1994. Studies on collar rot of teak seedlings.
560. Mohamed Ali, M.I; Mathew, G. 1989. Occurrence of *Beauveria bassiana* (Balsamo) Vuill. on sapling borer, *Sahyadrassus malabaricus* Moore (Lepidoptera: Hepalidae) in Kerala, India.
561. Mohamed Ali, M.I; Nair, N.G. 1989. *Pythium intermedium* causing root rot of *Oroxylum indicum*: A new Indian record.
562. Mohamed Ali, M.I; Sharma, J.K. 1996. Impact of seed microflora on seed germination and seedling vigour of some important indigenous tree species of Kerala.

563. Mohamed Ali, M.I; Sharma, J.K. 1996. Seedling diseases of some indigenous trees of Kerala and their impact on seedling productivity.
564. Mohamed Ali, M.I; Sudheendrakumar, V.V. 1997. Possible use of microbial pathogens against teak pests.
565. Mohamed Ali, M.I; Varma, R.V. 1994. *Beauveria bassiana* - a new insect pathogen on *Atteva fabriciella* and its comparative efficacy with *Paecilomyces farinosus*.
566. Mohamed Ali, M.I; Varma, R.V. 1994. A leaf bioassay technique for determining the conidial activity of *Paecilomyces* spp. against *Eligma narcissus* Roth.
567. Mohamed Ali, M.I; Varma, R.V. 1992. Fungal pathogens of *Eligma narcissus indica* Roth (Lepidoptera: Noctuidae), the *Ailanthus* defoliator, with special reference to *Paecilomyces farinosus* and *P. fumosoroseus*.
568. Mohamed Ali, M.I; Varma, R.V; Sudheendrakumar, V.V. 1992. Microbial pathogens associated with forest insect pests in Kerala.
569. Mohan Kumar, B; Muraleedharan, P.K; Maya V Mahajan. 2001. Linkages between ecology and economics: An analysis of the non-wood forest production scenario in India.
570. Mohanadas, K. 1998. Shoot borer, *Hypsipyla robusta* problem in the Mahogany plantations of Kerala.
571. Mohanadas, K. 1986. A new host record for the teak defoliator, *Hyblaea puera* (Lepidoptera: Hyblaeidae).
572. Mohanadas, K. 1986. *Brachymeria excarinata* Gahan (Hymenoptera: Chalcididae) as pupal parasitoid of *Calopepla leayana* Latr. in Kerala, India: A new record.
573. Mohanadas, K. 1996. New records of some natural enemies of the teak defoliator, *Hyblaea puera* Cramer (Lepidoptera: Hyblaeidae) from Kerala, India.
574. Mohanadas, K; Mathew, G; Nair, K.S.S; Menon, A.R.R. 1990. Pest incidence in natural forests - a study in moist deciduous and evergreen forest of India.
575. Mohanadas, K; Varma, R.V. 1984. A new host record for *Atteva fabriciella* (Lepidoptera: Yponomeutidae) a pest of *Ailanthus*.
576. Mohanan, C. 1993. Biodeterioration of post-harvest rattans.
577. Mohanan, C. 1988. Colletotrichum foliar infections on *Leucaena leucocephala* in Kerala, India - New records.
578. Mohanan, C. 1990. Diseases of rattans in India.
579. Mohanan, C. 1990. Diseases of bamboos in Kerala.
580. Mohanan, C. 1993. Diseases of rattans in Kerala, India and their possible control.
581. Mohanan, C. 1993. Epidemiology and control of Rhizoctonia web blight of bamboo.
582. Mohanan, C. 2000. Epidemiology and integrated management of web blight in bamboo nurseries in India.

583. Mohanan, C. 1992. Forest fire - its impact on stand productivity with reference to decay and diseases.
584. Mohanan, C. 1988. Foliar diseases of *Pongamia pinnata* caused by *Asperisporium pongamiae* and *Urohendersonia pongamiae* in Kerala.
585. Mohanan, C. 1991. Fungal staining and biodeterioration of rattans.
586. Mohanan, C. 1993. Impact of diseases on the productivity of bamboo stands in Kerala.
587. Mohanan, C. 2000. Introduction of roottrainer technology in forestry - impact on nursery disease management.
588. Mohanan, C. 1994. Little leaf disease of bamboo in Kerala, India.
589. Mohanan, C. 2002. Protection of rattan against fungal staining and biodeterioration.
590. Mohanan, C. 1993. Protective measures against fungal staining in rattans.
591. Mohanan, C. 2000. Status of forest nursery diseases in India and emerging trends in seedling disease management.
592. Mohanan, C; Liese, W. 1990. Diseases of bamboos.
593. Mohanan, C; Muraleedharan, P.K. 1988. Rattan resources of the sacred groves of Kerala, India.
594. Mohanan, C; Sharma, J.K. 1982. A serious disease of *Anacardium occidentale* L. caused by *Cylindrocladium camelliae* and its possible control.
595. Mohanan, C; Sharma, J.K. 1986. *Bipolaris spicifera* and *Exserohilum rostratum* causing leaf spots of *Eucalyptus tereticornis* - new record from India.
596. Mohanan, C; Sharma, J.K. 1984. *Calonectria theae* Loos and its anamorph *Cylindrocladium theae* (Petch) Alf. and Sob. a new record on *Eucalyptus* from India.
597. Mohanan, C; Sharma, J.K. 1985. *Cylindrocladium* causing seedling diseases of *Eucalyptus*.
598. Mohanan, C; Sharma, J.K. 1994. Diseases and their management in social forestry plantations in India.
599. Mohanan, C; Sharma, J.K. 1993. Diseases of *Casuarina equisetifolia* in India.
600. Mohanan, C; Sharma, J.K. 1990. Diseases of exotic acacias in India.
601. Mohanan, C; Sharma, J.K. 1987. *Phomopsis eucalypti* and *Bartalinia terricola*, new pathogen records on eucalypts from India.
602. Mohanan, C; Sharma, J.K. 1991. Seed pathology of forest tree species in India - present status, practical problems and future prospects.
603. Mohanan, C; Sharma, J.K. 1985. Shot-hole disease of *Terminalia paniculata* caused by *Cylindrocladium quinqueseptatum* - a new record.
604. Mohanan, C; Sharma, J.K; Florence, E.J.M. 1997. Nursery diseases of teak in India.

605. Mohanan, C; Sharma, J.K; Jyothi, K. 1980. Seed microflora of some important medicinal plants and their possible role in biodeterioration.
606. Mohanan, C; Sharma, J.K; Nair, C.T.S; Kedharnath, S; Kondas, S. 1986. Epidemiology of *Cylindrocladium* diseases of Eucalyptus.
607. Mohandas, K; Varma, R.V. 1996. Ecology and possible control of the Mahogany Shoot Borer, *Hypsipyla robusta* in Kerala, India.
608. Mohanan, C; Varma, R.V. 1988. *Paecilomyces farinosus*, a potential biocontrol agent of some lepidopterous tree pests in India.
609. Muraleedharan, P.K. 2001. Economic feasibility, viability and sustainability of bamboo shelter: A study in Kerala and Karnataka state.
610. Muraleedharan, P.K. 1982. Resource use efficiency in rice cultivation in low lying lands in Kerala.
611. Muraleedharan, P.K. 1992. The cane processing industry in Kerala [India]: An overview.
612. Muraleedharan, P.K. 2003. Non-timber forest produce in the Western Ghats.
613. Muraleedharan, P.K.; Anitha, V. 2000. The economic impact of *Mikania micrantha* on teak plantations in Kerala.
614. Muraleedharan, P.K.; Anitha, V. 1999. The economic impact of *Mikania micrantha* on the agroforestry production system in the Western Ghats of Kerala.
615. Muraleedharan, P.K; Anitha, V. 1999. Some economic aspects of harvesting, processing and marketing of cane and cane products in Kerala.
616. Muraleedharan, P.K; Anitha, V; Binilkumar, A.S. 2004. Depletion and economic extinction of NTFP resources in Peechi-Vazhani and Chimmoni Wildlife Sanctuaries, Kerala: A socio-economic study.
617. Muraleedharan, P.K.; Anitha, V; Seethalakshmi, K.K.; Sasidharan, N; Sreenivasan, M.A. 2000. Collection and marketing of non-wood forest products in Kerala: Institutional efficacy.
618. Muraleedharan, P.K; Anitha, V; Sreelakshmi, K; Simon, T.D. 2003. Bamboo shelters in Kerala: Problems and prospects.
619. Muraleedharan, P.K; Anitha, V; Sreenivasan, M.A; Seethalakshmi, K.K; Sasidharan, N. 1999. Marketing of non-wood forest products in Kerala: Price spread and economic efficiency.
620. Muraleedharan, P.K; Anitha, V; Swarupandan, K. 2005. Changes in resource use pattern and its linkages to forest degradation: A case of Shola forests in the Western Ghats, Kerala.
621. Muraleedharan, P.K; Anjana Shankar. 1994. Rattan based industry in Kerala: Raw material supply and marketing.
622. Muraleedharan, P.K; Jayasankar, B; Rugmini, P. 1996. Economics of cane processing in South India.

623. Muraleedharan, P.K; Jayasankar, B; Rugmini, P. 1996. Some economic aspects of cane harvesting in Kerala.
624. Muraleedharan, P.K; Manoharan, T.R; George Mathew. 2001. Economic valuation of biodiversity: Problems and prospects.
625. Muraleedharan, P.K; Rugmini, P. 1990. Problems and prospects of traditional bamboo-based industry in Kerala.
626. Muraleedharan, P.K; Rugmini, P; Anitha, V. 1993. Farm size and productivity relationship in modern agriculture: A case study of kole lands in Thrissur.
627. Muraleedharan, P.K; Sankar, S. 1992. Sustainability of traditional agriculture: A study of short fallow shifting cultivation in Attappady.
628. Muraleedharan, P.K; Sankar, S; Sanathanan Velluva. 1993. Evaluation of agro-eco system properties and efficiency: A case study of tribal agriculture in Attappady, Kerala.
629. Muraleedharan, P.K; Sasidharan, N; Kumar, B.M; Sreenivasan, M.A; Seethalakshmi, K.K. 2005. Non-timber forest products in the Western Ghats of India: Floristic attributes, extraction and regeneration.
630. Muraleedharan, P.K; Sasidharan, N; Seethalakshmi, K.K. 2001. Biodiversity in tropical moist forest: A study of sustainable use of non-wood forest products in the Western Ghats, Kerala.
631. Muraleedharan, P.K; Seethalakshmi, K.K. 1993. Rattan plantation and its profitability.
632. Muraleedharan, P.K; Seethalakshmi, K.K; Raveendran, V.P; Sreelakshmi, K. 2001. Some policy changes for promoting rattan industry in Kerala.
633. Muraleedharan, P.K; Sreelakshmi, K; Rugmini, P. 2003. Collection, marketing and sustainable use of non-timber forest products in Kerala: Some economic and ecological issues.
634. Muraleedharan, P.K.; Sreelakshmi, K; Sreenivasan, M.A. 2001. Unsustainable extraction and depletion of non-wood forest products in Kerala: Some economic issues.
635. Muralidharan, E.M. 1995. An evaluation of cost reduction measures in micropropagation.
636. Muralidharan, E.M. 1999. Energy conservation measures in a tissue culture facility.
637. Muralidharan, E.M. 1993. Prospects for tissue culture of rattans in India.
638. Muralidharan, E.M; Mascarenhas, A.F. 1995. Somatic embryogenesis in Eucalyptus.
639. Nair, C.T.S. 1986. Ecodevelopment: A meaningful alternative or fashionable slogan?
640. Nair, C.T.S; Krishnankutty, C.N. 1983. Forestry planning in Kerala: Do we have adequate data?
641. Nair, C.T.S; Krishnankutty, C.N; Rao, Y.R; Vergara, N.T; Lovelace, G.W. 1985. Socio-economic factors influencing farm forestry: A case study of tree cropping in the homesteads in Kerala, India )
642. Nair, K.K.N. 1987. Medhya Rasayana Drug Brahmi - its botany, chemistry and uses.

643. Nair, K.K.N. 1997. A contribution to the bibliography on the angiosperm flora of Kerala State.
644. Nair, K.K.N. 1985. Additions to Gamble's Flora of the Presidency of Madras (1915-1935) from the States of Kerala, Tamil Nadu, Karnataka and Andhra Pradesh upto 1982. Part 1.
645. Nair, K.K.N. 1986. Additions to Gamble's Flora of the Presidency of Madras (1915-1935) from the States of Kerala, Tamil Nadu, Karnataka and Andhra Pradesh upto 1982. Part 2.
646. Nair, K.K.N. 1986. An amended description of *Dalbergia beddomei* Thoth. (Fabaceae) re-located from Silent Valley, Kerala, India.
647. Nair, K.K.N. 1986. Conservation of the genetic diversity of *Dalbergia* species in the Western Ghats with special reference to Kerala.
648. Nair, K.K.N. 1999. Ethnobiology and its application in biodiversity conservation.
649. Nair, K.K.N. 1992. Endemic wild relatives of cultivated clove and rose-apple in the proposed Pooyamkutty hydro-electric project area.
650. Nair, K.K.N. 1992. Flora of the proposed Pooyamkutty hydro-electric project area in the Western Ghats of Kerala, India.
651. Nair, K.K.N. 1989. Genus *Dalbergia* L.f. (Fabaceae) in Kerala State.
652. Nair, K.K.N. 1985. Identity and distribution of *Dalbergia benthamii* Prain and *D. rubiginosa* Roxb. (Fabaceae).
653. Nair, K.K.N. 1984. Nomenclature corrections in Indo-Ceylonese *Mesua ferrea* complex.
654. Nair, K.K.N. 1991. Phytogeographical analysis of the flora of the proposed Pooyamkutty hydro-electric project area in the Western Ghats of Kerala, India.
655. Nair, K.K.N. 1992. South-West Indian endemic *Psychotrias* (Rubiaceae) in the proposed Pooyamkutty hydro-electric project area.
656. Nair, K.K.N. 1993. Southern Peninsular Indian endemic trees in the proposed Pooyamkutty hydro-electric project area.
657. Nair, K.K.N. 1985. Two unrecorded species of *Dalbergia* L.f. (Fabaceae) in Kerala.
658. Nair, K.K.N; Chand Basha, S. 1995. Centres in Kerala rich in endemic angiosperms as potential sites for biodiversity preservation.
659. Nair, K.K.N; Chand Basha, S. 1991. Endemic angiosperms of the Western Ghats of India with special reference to Kerala: A review.
660. Nair, K.K.N; Jayakumar, R. 1999. Ethnobotany of Hill-Pulaya tribe in the context of biodiversity rehabilitation at Chinnar Wildlife Sanctuary, Western Ghats of India.
661. Nair, K.K.N.; Jayakumar, R. 2000. Ethnobotany of Hill-Pulaya and Muthuva tribes in Chinnar Wildlife Sanctuary, Western Ghats of India.
662. Nair, K.K.N; Jayakumar, R. 1998. Ethnobotany of Muthua tribe in the context of biodiversity rehabilitation at Chinnar Wildlife Sanctuary, Western Ghats of India.

663. Nair, K.K.N; Mohanan, C; Mathew, G. 2005. Preliminary observation on seed and plantation technology for *Garcinia gummigutta* (Guttiferae): An indigenous and economic tree crop of the Indian Peninsula.
664. Nair, K.K.N; Pandalai, R.C; Bhat, K.V; Mathew, G; Mohamed Ali, M.I. 1999. Botany, wood characteristics and silvicultural techniques of the indigenous timber species, *Grewia tiliaefolia* Vahl.
665. Nair, K.K.N; Pandalai, R.C; Bhat, K.V; Mathew, G; Mohamed Ali, M.I. 1995. Botany, wood characteristics and silvicultural techniques of the South-East Asian indigenous timber species - *Haldina cordifolia* (Haldu).
666. Nair, K.K.N.; Renuka, C.; Kumar, M.; Yesodharan, K. 2001. Knowledge on the plant diversity of Kerala: The present scenario and future needs.
667. Nair, K.K.N; Soniya, E.V. 1989. Further additions to Gamble's Flora of the Presidency of Madras (1915-1935) from the States of Kerala, Tamil Nadu, Karnataka and Andhra Pradesh.
668. Nair, K.S.S. 1987. Life history, ecology and pest status of the sapling borer, *Sahyadrassus malabaricus* (Lepidoptera, Hepialidae).
669. Nair, K.S.S. 1987. Migration, a mechanism of parasite evasion. *Advances in Biological Control Research in India*.
670. Nair, K.S.S. 1990. Conservation, development and utilization of India's non-timber forest wealth - the prospects and priorities. *Status and Potential of Non-timber Products in the Sustainable Development of Tropical Forests*.
671. Nair, K.S.S. 1990. An action plan for assessing tropical forest pest problems and establishing priorities for research.
672. Nair, K.S.S. 1987. Control of the sapling borer, *Sahyadrassus malabaricus* (Lepidoptera, Hepialidae) in forest plantations.
673. Nair, K.S.S. 1980. Current state of pesticide use in Kerala forests and future projection up to 2000 A.D.
674. Nair, K.S.S. 1986. Important insect pest problems of forest plantations in tropical India.
675. Nair, K.S.S. 1988. Pest management in Indian forestry - how to bridge the gap between theory and practice.
676. Nair, K.S.S. 1990. Social, economic and policy aspects of integrated pest management of forest defoliators in India.
677. Nair, K.S.S. 1994. Pest control practices in forestry.
678. Nair, K.S.S. 1988. Role of host trees in the dynamics of forest insect outbreaks.
679. Nair, K.S.S. 1985. Role of behavioural studies in the development of management strategies for forest insect pests.
680. Nair, K.S.S. 1988. The teak defoliator in Kerala, India.



681. Nair, K.S.S. 1986. The problem of insect defoliation of teak - to spray or not to spray.
682. Nair, K.S.S; Biju Babjan; Sajeev, T.V; Sudheendrakumar, V.V; Mohamed Ali, M.I; Varma, R.V; Mohanadas, K. 1996.
683. Nair, K.S.S; Easa, P.S. 1997. Animal bio-diversity in Kerala forests.
684. Nair, K.S.S; Kallarackal, J; Chacko, K.C. 1999. Environmental impact of plantations.
685. Nair, K.S.S; Mammen Chundamannil; Chacko, K.C; Ganapathy, P.M; Chidambara Iyer, S. 1998. Characteristics of private sector forestry research in India.
686. Nair, K.S.S; Mathew, G. 1992. Biology, infestation characteristics and impact of the bagworm, *Pteroma plagiophleps* Hamps. in forest plantations of *Paraserianthes falcataria*.
687. Nair, K.S.S; Mathew, G. 1984. Dried tapioca tuber for laboratory rearing of the *bamboo borer*, *Dinoderus minutus* Fabr. (Coleoptera: Bostrychidae).
688. Nair, K.S.S; Mathew, G. 1993. Diversity of insects in Indian forests - the status of our knowledge.
689. Nair, K.S.S; Mathew, G. 1990. Priorities in forest entomological research in India.
690. Nair, K.S.S; Mathew, G; Sivarajan, M. 1981. Occurrence of the bagworm, *Pteroma plagiophleps* Hampson (Lepidoptera, Psychidae) as a pest of the tree, *Albizia falcataria* in Kerala, India.
691. Nair, K.S.S; Mathew, G; Varma, R.V; Sudheendrakumar, V.V. 1986. Insect pests of Eucalypts in India. )
692. Nair, K.S.S; Mohanadas, K. 1996. Early events in the outbreak of the teak caterpillar, *Hyblaea puera*.
693. Nair, K.S.S; Mohanadas, K; Sudheendrakumar, V.V. 1997. Biological control of the teak defoliator, *Hyblaea puera* Cramer (Lepidoptera, Hyblaeidae) using insect parasitoids - problems and prospects.
694. Nair, K.S.S; Sudheendrakumar, V.V. 1986. Population dynamics of teak defoliators.
695. Nair, K.S.S; Sudheendrakumar, V.V. 1993. Economics of pest control in forest plantations.
696. Nair, K.S.S; Sudheendrakumar, V.V. 1986. The teak defoliator, *Hyblaea puera*: Defoliation dynamics and evidences for short-range migration of moths.
697. Nair, K.S.S; Sudheendrakumar, V.V; Mohanadas, K; Varma, R.V. 1997. Control of the teak defoliator - past attempts and the new promise.
698. Nair, K.S.S; Sudheendrakumar, V.V; Mohanadas, K; Varma, R.V; Mathew, G; Koshy, M.P; Kedharnath, S. 1997. Search for teak trees resistant to the defoliator, *Hyblaea puera* Cramer (Lepidoptera, Hyblaeidae).
699. Nair, K.S.S; Sudheendrakumar, V.V; Sajeev, T.V; George Mathew; Mohanadas, K; Varma, R.V; Sivadas, T. 2004. A solar light trap for monitoring forest insect populations.

700. Nair, K.S.S; Sudheendrakumar, V.V; Varma, R.V; Chacko, K.C; Jayaraman, K. 1996. Effect of defoliation by *Hyblaea puera* and *Eutectona machaeralis* (Lepidoptera) on volume increment of teak.
701. Nair, K.S.S; Varma, R.V. 1985. Some ecological aspects of the termite problem in young eucalypt plantations in Kerala, India.
702. Nair, K.S.S; Varma, R.V; Karunakaran, C.K; Muhammad, E; Chand Basha, S. 1986. Field trials for controlling termites in eucalypt plantations.
703. Nair, K.S.S; Varma, R.V; Mathew, G; Sudheendrakumar, V.V; Mohanadas, K. 1996. Perceived impact of insect pest problems in forest plantations in Kerala.
704. Nair, N.G. 1986. Endemic trees of Western Ghats: Their importance and conservation. Ecodevelopment of Western Ghats.
705. Nair, P.V. 1990. Listing programs.
706. Nair, P.V. 1989. Development of nonsocial behaviour in the Asiatic elephants.
707. Nair, P.V; Jayson, E.A. 1990. Interaction between elephants and teak plantations in Parambikulam Wildlife Sanctuary.
708. Nair, P.V; Ramachandran, K.K; Easa, P.S. 1986. Characteristics of three populations of elephants of the Western Ghats.
709. Nair, P.V; Sarojam, N. 1990. Bibliometric analysis of elephant literature.
710. Nandakumar, U.N. 1999. Status of rattan and rattan inventory in India.
711. Nandakumar, U.N; Menon, A.R.R. 1993. Resource survey of rattans: Problems and prospects.
712. Nandakumar, U.N; Menon, A.R.R; Cracknell, A.P. 1993. Application of remote sensing in rattan resource survey - a case study from Kerala, India.
713. Narayanan, C; Dudjinski, M.J; Sharma, J.K; Mohanan, C. 1997. The extent, recognition and management of *Casuarina* blister blight bark disease.
714. Narayanan, C; Sharma, J.K. 1996. Epidemiological studies on blister bark disease of *Casuarina equisetifolia* caused by *Trichosporum vesiculosum*.
715. Narayanan, I.V; Swarupanandan, K. 1996. Regeneration status of moist deciduous forests in South West India.
716. Narendran, T.C.; Jobiraj, T; Mohandas, K. 2000. A remarkable new species of the bee genus *Halictus latreille* (Hymenoptera: Apoidea: Halictidae) from India.
717. O'Connell, A.M; Sankaran, K.V. 1997. Organic matter accretion, decomposition and mineralisation.
718. Padmakumar, P.K; Sreekumar, V.B; Rangan, V.V; Renuka, C. 2003. Palm leaves as writing material: history and methods of processing in Kerala.
719. Padmanabhan, P. 1999. Conservation and management of endemic and endangered mammals of Western Ghats in Kerala, South India.

720. Padmanabhan, P. 1997. Development of beekeeping in forestry and agro-forestry plantations in Kerala.
721. Padmanabhan, P. 1991. Productive and useful insects and their protection.
722. Padmanabhan, P. 2003. Prospects and problems of bee-keeping in Kerala, South India.
723. Padmanabhan, P. 2000. The role of small mammals in forest ecosystem of Western Ghats.
724. Padmanabhan, P. 1997. Honey to be imported?
725. Page, D; Gnanaharan, R. 1999. Influence of wood moisture on the preservative treatment of NewZeland-grown poplar.
726. Palot, M. Jafer; Mathew, G; Zacharias, V.J. 1997. Butterflies of Periyar Tiger Reserve, Kerala (India).
727. Pandalai, R.C. 2003. Commercial cultivation, scientific harvesting and preservation of medicinal plants.
728. Pandalai, R.C. 2001. Forest and deforestation (Malayalam).
729. Pandalai, R.C. 2002. Impact of deforestation on human health.
730. Pandalai, R.C; Chacko, K.C. 1987. Early growth and survival of *Eucalyptus tereticornis* seedlings and stumplings.
731. Pathummal Beevi, S; Jagadeesh Kumar, T.N; Suma, A; Usha, K.E; Mathew, G. 1993. New record of *Anigraea albomaculata* Hamp. (Noctuidae: Lepidoptera) as a pest of cashew in Kerala.
732. Price, C; Nair, C.T.S. 1984. Cost-benefit analysis and the consideration of forestry alternatives.
733. Priya, P.B; Bhat, K.M. 1998. False ring formation in teak (*Tectona grandis* L.f.) and the influence of environmental factors.
734. Priya, P.B; Bhat, K.M. 1997. Wood anatomical changes in juvenile teak due to insect defoliation.
735. Priya, P.B; Bhat, K.M. 1999. Influence of rainfall, irrigation and age on the growth periodicity and wood structure in teak (*Tectona grandis*).
736. Rabindra, R.J; Varma, R.V; Mohamed Ali, M.I; Sudheendrakumar, V.V. 1997. Tests for cross-infectivity of the nuclear polyhedrosis virus of the teak defoliator, *Hyblaea puera* to some lepidopterous insects.
737. Rajesh, K.P; Augustine, J; Sasidharan, N. 1996. Occurrence of *Rotala ritchiei* (Clarke) Koechne (Lythraceae) in Periyar Tiger Reserve, Kerala.
738. Rajesh, K.P; Augustine, J; Sasidharan, N. 1997. Rediscovery of *Taeniophyllum scaberulum* Hook. f. an endemic orchid from Periyar Tiger Reserve, Kerala, India.
739. Rajesh, K.P; Sasidharan, N; Madhusoodanan, P.V. 1997. On the occurrence of *Arthropteris palisotii* (Desv.) Alston (Oleandraceae), a little known climbing fern in India.

740. Ramachandran, K.K. 1985. A note on the scavenging behaviour of stripednecked mongoose on tiger's kill.
741. Ramachandran, K.K. 1986. Ecology and distribution of the arboreal mammals of Western Ghats.
742. Ramachandran, K.K. 1984. Observations on unusual sexual behaviour in elephants.
743. Ramachandran, K.K. 1993. Status survey and distribution of endangered grizzled giant squirrel in Chinnar Wildlife Sanctuary, Kerala, India.
744. Ramachandran, K.K; Easa, P.S; Nair, P.V. 1987. Management of Periyar Tiger Reserve - problems and perspectives.
745. Ramachandran, K.K.; Gigi K. Joseph. 2001. Feeding ecology of Nilgiri langur (*Trachypithecus johnii*) in Silent Valley National Park, Kerala, India.
746. Ramachandran, K.K; Gigi K. Joseph. 2001. Distribution and demography of diurnal primates in Silent Valley National Park and adjacent areas, Kerala, India.
747. Ramachandran, K.K; Gigi K Joseph. 2000. Habitat utilization of lion-tailed macaque (*Macaca silenus*) in Silent Valley National Park, Kerala, India.
748. Ramachandran, K.K; Gigi K Joseph. 1997. Primate community in Silent Valley National Park.
749. Ramachandran, K.K; Gigi K Joseph. 1998. The Conservation perspective in rainforest management: A case study from Kerala, South India.
750. Ramachandran, K.K; Nair, P.V; Easa, P.S. 1986. Ecology of larger mammals of Periyar Wildlife Sanctuary.
751. Rangan, V.V; Sreekumar, V.B; Renuka, C; Padmakumar, P.K. 2003. Report on three *Calamus* species (Arecaceae) new to Kerala, India.
752. Rathinasabapathy, B; Daniel, B.A; Mathew, G. 1998. Butterflies of the Coimbatore Zoological Park site, Anaikatty.
753. Ravindran, K. 1990. Bamboo Information Centre (India).
754. Rekha Sharma; Krishnamurthy, K.V. 1984. Behaviour of a neonate elephant (*Elephas maximus*).
755. Remesh, M; Kumar, M; Manilal, K.S. 2003. Medicinal pteridophytes in Rheeds Hortus Malabaricus.
756. Renuka, C. 1998. Rattans, bamboos and reeds.
757. Renuka, C. 1990. Rattan plantation - its potential and prospects in social forestry.
758. Renuka, C. 1993. Rattans - their diversity in habit and habitat.
759. Renuka, C. 1987. A new species of *Calamus* (palmae) from India.
760. Renuka, C. 1987. A new species of the genus *Calamus* Linn. (Arecaceae) from India.

761. Renuka, C. 1999. A status report on Rattans of Kerala.
762. Renuka, C. 1995. Genetic diversity and conservation of rattans.
763. Renuka, C. 1986. Distribution of canes in Kerala and the need for their conservation.
764. Renuka, C. 1997. Distribution and rattan resources in India.
765. Renuka, C. 1999. Indian rattan distribution - An update.
766. Renuka, C. 1996. Indian rattans - Their diversity and conservation.
767. Renuka, C. 1999. Notes on the identity of *Calamus delessertianus* Becc.
768. Renuka, C. Palms of India: Status, threats and conservation strategies.
769. Renuka, C. 1998. Palm resources of Kerala - their distribution and conservation.
770. Renuka, C. 1991. Rare and endangered rattans of the Western Ghats and their conservation.
771. Renuka, C. 1988. Rattan industry in Kerala - an overview.
772. Renuka, C. 1987. Rattan resources of Kerala and their conservation.
773. Renuka, C. 1995. Reproductive biology of rattans.
774. Renuka, C. 1993. Taxonomy of South Indian rattans.
775. Renuka, C. 2002. Status of rattan resources and uses in South Asia.
776. Renuka, C. 1990. Two new species of *Calamus* (Arecaceae) from India.
777. Renuka, C.; Bhat, K.M.; Dhamodaran, T.K.; Muraleedharan, P.K.; Seethalakshmi, K.K. 2001. Rattans in India: Status and opportunities.
778. Renuka, C; Anto, P.V. 1998. *Calamus huegelianus* Mart. - a critically endangered rattan of the Nilgiri Biosphere Reserve.
779. Renuka, C; Bhat, K.M. 1987. On the occurrence of *Calamus metzianus* Schecht in Kerala.
780. Renuka, C; Indira, E.P; Muraleedharan, E.M. 1996. Genetic diversity and conservation of certain species of rattans in Andaman & Nicobar Islands & Southern India.
781. Renuka, C; Indira, E.P; Muralidharan, E.M. 1996. Genetic diversity and conservation of certain species of rattans in Andaman and Nicobar Islands and Southern India.
782. Renuka, C; Lakshmana, A.C. 1990. *Calamus karnatakensis* Renuka & Lakshmana (Arecaceae).
783. Renuka, C; Manilala, K.S; Sreekumar, V.B. 2003. Medicinal palms in Rheede's Hortus Malabaricus.
784. Renuka, C; Nambiar, V.P.K. 1985. Axillary shoot development in the aerial stem of *Calamus*.

785. Renuka, C; Rao, A.N. 1997. Nursery practices for rattan in the Luasong Forestry Centre, Sabah.
786. Renuka, C; Rugmini, P. 1996. Studies on the ex-situ performance of different species of rattans. 94)
787. Renuka, C; Sasidharan, N. 1991. Notes on hitherto undescribed fruits of three South Indian rattans.
788. Renuka, C; Sasidharan, N; Anto, P.V. 1997. A new species of *Calamus* (Arecaceae) from Silent Valley, Kerala, India.
789. Renuka, C; Seethalakshmi, K.K. 1988. Phenology and propagation of *Calamus* - their bearing on practical applications.
790. Renuka, C; Swarupanandan, K. 1986. Morphology of the flower in *Thottea siliquosa* and the existence of staminodes in Aristolochiaceae.
791. Renuka, C; Vijayakumaran, T.T. 1994. Notes on the identity of *Calamus pseudorivalis* Becc. (Arecaceae) with a new species of the genus from Andamans.
792. Renuka, C; Vijayakumaran, T.T. 1994. Some new species of rattan from Andaman & Nicobar Islands.
793. Rugmini, P; Balagopalan, M. 1994. Soil properties as influenced by elevation: A factor analysis.
794. Rugmini, P; Balagopalan, M. 1996. Cluster analysis of soil properties as influenced by elevation.
795. Rugmini, P; Balagopalan, M. 1994. Factor analysis of soil properties in *Paraserianthes falcataria* (L.) Nielson plantations.
796. Rugmini, P; Jayaraman, K. 1997. An expert system for designing experiments in forestry.
797. Rugmini, P; Jayaraman, K. 1996. Estimation of tree volume from girth measurements below breast-height.
798. Rugmini, P; Jayaraman, K; Bhadran, V.K. 1997. Designing experiments in forestry through expert
799. system.
800. Sabu Jahas, S.A; Thomas, J; Easa, P.S. 1996. A report on the occurrence of sawscaled viper, *Echis carinatus* in Chinnar Wildlife Sanctuary, Kerala.
801. Sajeev, K.K; Sasidharan, N. 1997. Ethnobotanical observations on the tribals of Chinnar Wildlife Sanctuary.
802. Sajeev, K.K; Sasidharan, N. 1998. Rediscovery of *Albizia lathamii* Hole - a critically endangered species from Chinnar Wildlife Sanctuary.
803. Sajeev, K.K; Sasidharan, N; Augustine, J. 1998. New records of grasses from Kerala.
804. Sajuk, K. Abraham; Easa, P.S; Sabu Jhas; Shaji, C.P. 2000. Amphibian fauna of Wayanad, Kerala.

805. Sanal Kumar, M.G; Sujatha, M.P; Sankar, S. 1999. Population density and diversity of micro-arthropods and annelids in the reed growing (*Ochlandra travancorica*) soil of Vazhachal Reserve Forest, Southern Western Ghats of India.
806. Sankar, S. 1989. Soils as influenced by slash burning for raising plantations of teak.
807. Sankar, S. 1986. What is wrong with Eucalypts?.
808. Sankar, S; Muraleedharan, P.K. 1990. Human ecology in Attappady reserve.
809. Sankara Pillai, K; Ravindran, K. 1994. Information for bamboo research: Activities of the Bamboo Information Centre - India.
810. Sankaran, K.V. 1993. *Collybia leucophaea* - an addition to Indian agaric flora.
811. Sankaran, K.V. 1994. Fungi associated with the decomposition of teak and Albizia leaf litter in Kerala.
812. Sankaran, K.V. 1991. Leaf litter mycoflora of *Eucalyptus tereticornis*.
813. Sankaran, K.V. 1997. Decomposition of teak leaf litter.
814. Sankaran, K.V. 1993. Decomposition of leaf litter of albizia (*Paraserianthes falcataria*), eucalypt (*Eucalyptus tereticornis*) and teak (*Tectona grandis*) in Kerala.
815. Sankaran, K.V. 1998. Eucalypt plantations in monsoonal tropics - Kerala, India.
816. Sankaran, K.V. et al. 2000. Effects of site management on Eucalyptus plantations in the monsoonal tropics - Kerala, india.
817. Sankaran, K.V; Balasundaran, M; Sharma, J.K. 1986. Seedling diseases of *Azadirachta indica* in Kerala, India.
818. Sankaran, K.V; Florence, E.J.M. 1995. Macrofungal flora and checklist of plant diseases of Malayattoor forests (Kerala).
819. Sankaran, K.V; Florence, E.J.M; Balasundaran, M; Nawshad, K.I. 1998. Fungal diversity.
820. Sankaran, K.V; Florence, E.J.M; Sharma, J.K. 1988. Foliar diseases of some forest trees in Kerala - new records.
821. Sankaran, K.V; Florence, E.J.M; Sharma, J.K. 1984. Two new diseases of forest tree seedlings caused by *Sclerotium rolfsii* in India.
822. Sankaran, K.V; Florence, E.J.M; Sharma, J.K. 1987. Two new species of Phomopsis from India.
823. Sankaran, K.V; Mohanadas, K; Mohamed Ali, M.I. 1988. *Beauveria bassiana* (Bals.) Vuill. A possible biocontrol agent against *Mylocceros viridanus* Fabr. and *Calopepla leayana* Latreille in South India.
824. Sankaran, K.V; Sharma, J.K. 1986. *Hydnum subvinosum*, a rare parasite on *Leucaena leucocephala* in India.

825. Sankaran, K.V; Sharma, J.K. 1996. Diseases of *Paraserianthes falcataria* in Kerala and their possible control measures.
826. Sankaran, K.V; Sharma, J.K. 1987. Three new hosts of pink disease caused by *Corticium salmonicolor* in Kerala.
827. Sankaran, K.V; Sutton, B.C. 1991. *Composporiella deightonii* gen. et sp. nov. (Coelomycetes) from Sierra Leone.
828. Sankaran, K.V; Sutton, B.C. 1991. *Myriellina imperatae* sp. nov. on *Imperata* from Papua New Guinea and Australia.
829. Sankaran, K.V; Sutton, B.C. 1991. *Pseudocercospora tetradeniae* sp. nov. on leaves of *Tetradenia* from Zimbabwe.
830. Sankaran, K.V; Sutton, B.C. 1991. *Phloeospora aethiopica* sp. nov. on *Acanthus* spp. from Ethiopia.
831. Sankaran, K.V; Sutton, B.C; Balasundaran, M. 1995. *Cryptosporiopsis eucalypti* sp. nov., causing leaf spots of eucalypts in Australia, India and USA.
832. Santhosh Kumar, V; Sankar, S; Nandakumar, D. 1993. Impact of settler population on tribal life-support systems and landuse of Attappady.
833. Sarojam, N. 1989. Bibliometric analysis of Indian forest entomology literature.
834. Sarojam, N; Hussain, K.H; Sankara Pillai, K; Ravindran, K. 1995. CDS/ISIS - Ventura Publisher interface for bulletin generation.
835. Sasidharan, N. 1996. *Desmodium uncinatum* (Jacq.) DC. (Fabaceae): A new record for India.
836. Sasidharan, N. 1999. A new species of *Orophea* (Annonaceae) from Western Ghats, India. Nord.
837. Sasidharan, N. 1992. A new species of *Aglaiia* from India.
838. Sasidharan, N. 2000. Diversity and endemism among the flora of Western Ghats with reference to Kerala.
839. Sasidharan, N. 1997. Floristic diversity in the forests of Thrissur.
840. Sasidharan, N. 2000. Medicinal plants of Kerala forests.
841. Sasidharan, N. 1996. Field identification of forest trees.
842. Sasidharan, N. 1991. Conservation of rare and threatened medicinal plants in the forests of Kerala.
843. Sasidharan, N. 1999. Floristic diversity of Shenduruny Wildlife Sanctuary, Southern Western Ghats, Kerala.
844. Sasidharan, N. 1986. On the rediscovery and distribution of five endemic and endangered taxa in Kerala.
845. Sasidharan, N. 1991. Rare and endemic trees in the forests of Trichur.



846. Sasidharan, N. 1999. Rare and threatened plants in Shenduruny Wildlife Sanctuary , a protected area in the Kerala forests.
847. Sasidharan, N. 1998. Rediscovery of four threatened and possibly extinct endemic tree legumes from Kerala.
848. Sasidharan, N; Anto, P.V. 1999. Additions to the flora of Silent Valley.
849. Sasidharan, N; Anto, P V 1997. New records of two rare and threatened plants for Kerala.
850. Sasidharan, N; Augustine, J. 1999. A new species of *Syzygium Gaertn.* (Myrtaceae) from Southern Western Ghats, India.
851. Sasidharan, N; Jomy Augustine. 1999. A new species of *Syzygium Gaertn.* (Myrtaceae) from Southern Western Ghats, India.
852. Sasidharan, N; Jomy Augustine. 1999. *Ficus caulocarpa* Miq. and *F. costata* Ait. (Moraceae) - Additions to the flora of India.
853. Sasidharan, N; Kumar, M. 1985. Three species of orchids new to Kerala forests.
854. Sasidharan, N; Nambiar, V.P.K. 1983. *Eleutheranthera ruderalis* (Sw.) Sch.- Bip. (Compositae), a new record for South India.
855. Sasidharan, N; Nambiar, V.P.K. 1983. *Hedyotis pinifolia* Wall. ex G.Don, (Rubiaceae), a new record for South India.
856. Sasidharan, N; Rajesh, K.P.; Jomy Augustine. 2000. Orchids of Periyar Tiger Reserve.
857. Sasidharan, N; Rajesh, K.P; Jomy Augustine. 1999. *Zeuxine affinis* (Lindl.) Benth. ex Hook.f. (Orchidaceae) - a new record for Peninsular India.
858. Sasidharan, N; Rajesh, K.P; Jomy Augustine. 1998. *Habenaria periyarensis*, a new orchid from India.
859. Sasidharan, N; Rajesh, K.P; Jomy Augustine. 1997. Orchids of high wavy recollected.
860. Sasidharan, N; Rajesh, K.P; Jomy Augustine. 1999. *Zeuxine affinis* (Lindl.) Benth. ex Hook.f. (Orchidaceae) - a new record for Peninsular India.
861. Sasidharan, N; Sivarajan, V.V. 1990. *Orophea malabarica* (Annonaceae): A new species from Peninsular India.
862. Sasidharan, N; Sivarajan, V.V. 1990. *Tarenna trichurensis* - a new species of Rubiaceae from Western Peninsular India.
863. Sasidharan, N; Sivarajan, V.V. 1994. A new species of *Ardisia* Sw. (Myrsinaceae) from Peninsular India.
864. Sasidharan, N; Sivarajan, V.V. 1989. *Curcuma peethapushpa* Sasidharan and Sivarajan: A new species of Zingiberaceae from India.
865. Sasidharan, N.; Sujanapal, P. 2002. A new species of *Medinilla* (Metastomataceae) from Anamalai hills, South India.

866. Sasidharan, N; Sujanapal, P. 2000. Rediscovery of *Haplothismia exannulata* Airy Shaw (Burmanniaceae) from its type locality.
867. Sasidharan, N; Sujanapal, P; Jomy Augustine. 2002. Reappearance of *Syzygium Myhendrae* (Beddome Ex Brandis) gamble and *Ellipanthus tomentosus* kurz in the Southern Western Ghats.
868. Sasidharan, N; Swarupanandan, K. 1992. A new species of Cassine (Celastraceae) from India.
969. Sasidharan, N; Swarupanandan, K. 1995. Discovery of some rare and interesting Asclepiads from Kerala.
870. Sasidharan, N; Vink, W. 1991. A new species of *Palaquium blanco* (Sapotaceae) from India.
871. Saxena, K.G; Tiwari, A.K; Porwal, M.C; Menon, A.R.R. 1992. Vegetation maps, mapping needs and scope of digital processing of Landsat Thematic Mapper data in tropical region of South-West India.
872. Seethalakshmi, K.K. Biodiversity, conservation and genetic improvement of bamboo.
873. Seethalakshmi, K.K. 1991. Collection and storage of bamboo seeds.
874. Seethalakshmi, K.K. 1999. Enrichment planting of four rattan species in natural forest.
875. Seethalakshmi, K.K. 1993. Flowering and fruiting of reed bamboos in Kerala.
876. Seethalakshmi, K.K. 1993. Physiological and biochemical factors affecting seed viability.
877. Seethalakshmi, K.K. 1993. Propagation of clustering rattans using suckers.
878. Seethalakshmi, K.K. 1995. Propagation of *Thyrsostachys oliveri* by culm cuttings.
879. Seethalakshmi, K.K; Barwani, O; Heddon, P; Lewis, M; Maunders, M; Blakesley, D. 1996. Auxin and adventitious root initiation in *Eucalyptus globulus*.
880. Seethalakshmi, K.K; Kumar, M; Sarojam, N; Sankara Pillai, K. 1996. Status of information on bamboos occurring in India.
881. Seethalakshmi, K.K; Preethi Madhavan. 1999. Molecular techniques for bamboo systematics.
882. Seethalakshmi, K.K; Surendran, T; Somen, C.K. 1990. Vegetative propagation of *Ochlandra travancorica* and *O. scriptoria* by culm cuttings.
883. Seethalakshmi, K.K; Venkatesh, C.S; Surendran, T. 1983. Vegetative propagation of bamboos using growth promoting substances - 1. *Bambusa balcooa* Roxb.
884. Shaji, C.P; Arun, L.K; Easa, P.S. 1996. Garra surendranathanii - a new Cyprinid fish from the Southern Western Ghats, India.
885. Shaji, C.P; Easa, P.S. 1995. *Homaloptera menoni* - a new homalopterid fish (Pisces: Homalopteridae) from Kerala.
886. Shaji, C.P; Easa, P.S. 1999. A review of amphibian studies in Kerala State, India.

887. Shaji, C.P; Easa, P.S. 1995. Extension of range of *Noemacheilus* (*Mesonoemacheilus*) *petrubanarescui* (Menon).
888. Shaji, C.P; Easa, P.S. 1995. Extension of range of *Danio* (*Brachydanio*) *rerio* Hamilton-Buchanan.
889. Shaji, C.P; Easa, P.S. 1995. Freshwater fish diversity in Wayanad, Kerala, South India.
890. Shaji, C.P; Easa, P.S. 1996/97. Fish fauna of Chalakudy river in Kerala.
891. Shaji, C.P; Easa, P.S. 1998. Status and distribution of endemic freshwater fishes in Kerala, Western Ghats, India.
892. Shaji, C.P; Easa, P.S; Chand Basha, S. 1995. Fresh water fish diversity in Aralam Wildlife Sanctuary, Kerala, South India.
893. Shanmuganathan, K; Chacko, K.C. 1988. Forest fire, its prevention and suppression.
894. Sharma, J.K. 1995. Current pathogen-host stress conditions in Asian tropical forests. Caring for the Forest - Research in a Changing World.
895. Sharma, J.K. 1986. Potential threat of native pathogens on exotic eucalypts in Kerala.
896. Sharma, J.K; Balasundaran, M; Florence, E.J.M. 1999. Increasing the productivity of eucalypts in Kerala through selection for disease resistance, higher growth and clonal technology.
897. Sharma, J.K; Florence, E.J.M. 1996. Fungal pathogens as a potential threat to tropical acacias - Case study of India.
898. Sharma, J.K; Florence, E.J.M; Mohanan, C. 1984. A shot-hole disease of *Ailanthus triphysa* caused by *Glomerella cingulata*.
899. Sharma, J.K; Florence, E.J.M; Mohanan, C. 1997. Current status of diseases in teak plantations in India and future research needs.
900. Sharma, J.K; Florence, E.J.M; Sankaran, K.V; Mohanan, C. 1988. Differential phytotoxic response of cut shoots of eucalypts to culture filtrates of pink disease fungus, *Corticium salmonicolor*.
901. Sharma, J.K; Florence, E.J.M; Sankaran, K.V; Mohanan, C. 1986. Toxin bioassay for assessing relative susceptibility of eucalypts to pink disease.
902. Sharma, J.K; Mathew, G. 1990. Disease and insects in forest nurseries in India and their management.
903. Sharma, J.K; Mohanan, C. 1981. An unrecorded leaf spot disease of *Eucalyptus* in Kerala caused by *Phaeoseptoria eucalypti* (Hansf.) Walker.
904. Sharma, J.K; Mohanan, C. 1982. *Cylindrocladium* spp. associated with various diseases of *Eucalyptus* in Kerala.
905. Sharma, J.K; Mohanan, C. 1992. Effect of some nursery practices on incidence and severity of diseases and growth of *Eucalyptus grandis* seedlings.

906. Sharma, J.K; Mohanan, C. 1990. In vitro evaluation of fungicides against *Cylindrocladium* spp. causing diseases of *Eucalyptus* in Kerala, India.
907. Sharma, J.K; Mohanan, C. 1986. Management of seedling diseases of eucalypts in nurseries.
908. Sharma, J.K; Mohanan, C. 1991. Pathogenic variation in *Cylindrocladium quinqueseptatum* causing leaf blight of *Eucalyptus*.
909. Sharma, J.K; Mohanan, C. 1996. Protection against fungal diseases in forestry.
910. Sharma, J.K; Mohanan, C. 1992. Relative susceptibility of *Eucalyptus* provenances to *Cylindrocladium* leaf blight in Kerala, India.
911. Sharma, J.K; Mohanan, C. 1987. *Phomopsis leucaenae* sp. Nov. causing foliar infection on *Leucaena leucocephala* in Kerala, India.
912. Sharma, J.K; Mohanan, C. 1997. Seed microflora of teak and its effect on seed germination and seedling growth.
913. Sharma, J.K; Mohanan, C. 1993. Severity of *Cylindrocladium* leaf blight in eucalypt plantation in relation to intercropping with tapioca and rainfall.
914. Sharma, J.K; Mohanan, C. 1980. Spermiophyte microflora of stored seeds of *Tectona grandis*, *Bombax ceiba* and *Eucalyptus* spp. in relation to germinability.
915. Sharma, J.K; Mohanan, C. 1990. Studies on conidial germination of *Cylindrocladium quinqueseptatum*, causing leaf blight of *Eucalyptus* in India.
916. Sharma, J.K; Mohanan, C; Florence, E.J.M. 1983. A little-leaf disease of *Eucalyptus* in Kerala, India.
917. Sharma, J.K; Mohanan, C; Florence, E.J.M. 1984. A new stem canker disease of *Eucalyptus* caused by *Botryodiplodia theobromae*.
918. Sharma, J.K; Mohanan, C; Florence, E.J.M. 1984. Nursery diseases of *Eucalyptus* in Kerala.
919. Sharma, J.K; Mohanan, C; Florence, E.J.M. 1985. Occurrence of *Cryphonectria* canker disease of *Eucalyptus* in Kerala, India.
920. Sharma, J.K; Mohanan, C; Florence, E.J.M. 1984. Outbreak of pink disease caused by *Corticium salmonicolor* in *Eucalyptus grandis* in Kerala, India.
921. Sharma, J.K; Mohanan, C; Florence, E.J.M. 1984. Two mycelia sterilia parasitic on foliage of hardwood seedlings in Kerala State, India.
922. Sharma, J.K; Mohanan, C; Rugmini, P. 1992. Cultural characters and growth of *Cylindrocladium quinqueseptatum* isolates.
923. Sharma, J.K; Mohanan, C; Yesodharan, K. 1990. Effect of seed rate and seed viability on the number of prickable seedlings of *Eucalyptus grandis*.
924. Sharma, J.K; Sankaran, K.V. 1988. Biocontrol of rust and leaf spot diseases.

925. Sharma, J.K; Sankaran, K.V. 1993. Chemical control of web blight of *Albizia falcataria* caused by *Rhizoctonia solani*.
926. Sharma, J.K; Sankaran, K.V. 1991. Epidemiological studies on rhizoctonia web blight of *Albizia falcataria*.
927. Sharma, J.K; Sankaran, K.V. 1988. Incidence and severity of Botryodiplodia die-back in plantations of *Albizia falcataria* in Kerala, India.
928. Sharma, J.K; Sankaran, K.V. 1984. Rhizoctonia web blight of *Albizia falcataria* in India.
929. Sharma, J.K; Sankaran, K.V; Balasundaran, M. 1995. Screening of different mycorrhizal isolates for *Acacia*, *Casuarina* and *Pterocarpus* growing in degraded acid soils of Kerala.
930. Sivadas, P; Narayanan, B; Kumar, M. 1987. On the occurrence of *Neisosperma oppositifolia* (Lamk.) Fosberg & Sachet at Kavarathi Island, Lakshadweep.
931. Sivaperuman, C; Jayson, E.A. 2000. Birds of Kole Wetlands, Thrissur, Kerala.
932. Sivaperuman, C; Jayson E.A. 2001. Structure and species composition of wetland birds in the Kole lands of Thrissur, Kerala. No. 942)
933. Somen, C.K; Seethalakshmi, K.K. 1989. Effect of different storage conditions on the viability of seeds of *Bambusa arundinacea*.
934. Somen, C.K; Seethalakshmi, K.K. 1991. Growth response of seedlings of *Acacia*, *Ailanthus* and *Casuarina* to triacontanol (Vipul).
935. Sreekumar, V.B.; Renuka, C; Induchoodan, N.C. 2002. Distribution of rattans in Andaman and Nicobar islands and their conservation.
936. Sreelakshmi, K; Muraleedharan, P.K. 2002. Biodiversity loss and the socio-economic root causes: A case study of the Peechi-vazhani Wildlife Sanctuary.
937. Srinivasan, M; Ramaswamy, G; Easa, P.S. 1998. Studies on lizard diversity in selected sacred groves of Kerala.
938. Stephen Sequiera; Kumar, M. 2003. Vascular epiphytes of Southern Western Ghats with special reference to endemic species.
939. Sudheendrakumar , V.V; Binoy, C.F; Suresh, P.V; Mathew, G. 2000. Habitat associations of butterflies in the Parambikulam Wildlife Sanctuary, Kerala, India.
940. Sudheendrakumar, V.V. 1990. A report on the ichneumonid parasite of *Hyblaea puera* recorded from Nilambur, Kerala.
941. Sudheendrakumar, V.V. 2002. Bioecology of *Sympiesis hyblaeae* Surekha (Hymenoptera: Eulophidae) a parasitoid of the teak defoliator, *Hyblaea puera* Cramer (Lepidoptera: Hyblaeidae).
942. Sudheendrakumar, V.V. 1994. Insect pests of forest plantations and their management in Kerala, India.
943. Sudheendrakumar, V.V. 1993. Notes on hymenopteran parasites of *Eutectona machaeralis* recorded from Nilambur, Kerala.

944. Sudheendrakumar, V.V. 1994. Pest of teak and their management.
945. Sudheendrakumar, V.V. 2003. Reproductive behaviour of *Hyblaea puera* Cramer (Lepidoptera: Hyblaeidae).
946. Sudheendrakumar, V.V. 1985. Studies on the parasites of *Hyblaea puera* in teak plantations at Nilambur.
947. Sudheendrakumar, V.V; Chacko, K.C. 1986. Effect of site preparation on incidence of termites in Eucalyptus plantations.
948. Sudheendrakumar, V.V; Jalali, S.K; Singh, S.P. 1995. Acceptance of the teak defoliator, *Hyblaea puera* (Cramer) (Lepidoptera: Hyblaeidae) by two exotic species of Trichogramma (Hymenoptera: Trichogrammatidae).
949. Sudheendrakumar, V.V; Mohamed Ali, M.I; Mohanadas, K. 1990. Studies on the bacterial pathogens associated with the teak defoliator, *Hyblaea puera* Cramer.
950. Sudheendrakumar, V.V; Mohamed Ali, M.I; Varma, R.V. 1988. Nuclear polyhedrosis virus of the teak defoliator, *Hyblaea puera*.
951. Sudheendrakumar, V.V; Nair, K.S.S; Chacko, K.C. 1993. Phenology and seasonal growth trend of teak at Nilambur (Kerala), India.
952. Sudheendrakumar, V.V; Nair, K.S.S; Varma, R.V. 1988. Seasonal incidence of *Eutectona machaeralis* (Walker) in teak plantations at Nilambur, Kerala.
953. Sudheendrakumar, V.V; Sajeev, T.V; Varma, R.V. Mass production of nucleopolyhedrovirus of the teak defoliator, *Hyblaea puera* Cramer using host population in teak plantations.
954. Sudheendrakumar, V.V; Varma, R.V. 1999. Record of a lac insect, *Kerria* sp. (Homoptera: Kerridae) in Kerala.
955. Sujanapal, P; Sasidharan, N. 2004. Dry deciduous forests of Parambikulam Wildlife Sanctuary and its significance to the flora of Kerala.
956. Sujanapal, P; Sasidharan, N. 2002. Relocation of *syzygium palghatense* Gamble (Myrfaceae) and description of its hitherto unknown fruits.
957. Sujatha, M.P. 1997. Soil nutrient reserve in a degraded tropical moist deciduous forest - a case study at Nilambur, Kerala.
958. Sujatha, M.P. 1998. Site and soil characteristics of *Calamus* growing areas in Kerala.
959. Sujatha, M.P; Jose, A.I; Sankar, S. 1996. *Ochlandra travancorica* Benth.: A promising plant for sustainable soil management in the Western Ghats of Kerala.
960. Sujatha, M.P; Rugmini, P. 1999. Growth response of calamus seedlings to nutrient inputs.
961. Sujatha, M.P; Thomas, T.P. 1997. Soil variability in a tropical moist deciduous forest of Kerala, India.
962. Suma, T.B; Balasundram, M. 2003. Isozyme variation in five provenances of *Santalum album* in India.

963. Suma, T.B; Sunil Thomas; Muralidharan, E.M. 1999. High frequency organogenesis in *Clausena indica* - a tree host of sandal.
964. Sunil, T.; Balasundaran, M. 2001. Detection of sandal spike phytoplasma by immunomicroscopy.
965. Sunil Thomas; Balasundaran, M. 1999. Detection of sandal spike phytoplasma by polymerase chain reaction.
966. Sunil Thomas; Balasundaran, M. 1998. In situ detection of phytoplasma in spike-disease affected sandal using DAPI stain.
967. Sunil Thomas; Balasundran, M. 2001. Purification of sandal spike phytoplasma for the production of polyclonal antibody.
968. Suraj, M.A; Menon, A.R.R; Varghese, A.O; Suresh Babu, P.K; Pradeepkumar, M. 1995. Land cover mapping using remote sensing data - a case study for Chimmony Wildlife Sanctuary.
969. Surendran, T; Seethalakshmi, K.K; Somen, C.K. 1986. Vegetative propagation of *Bambusa arundinacea* and *Dendrocalamus strictus* by culm cuttings.
970. Surendran, T; Venkatesh, C.S; Seethalakshmi, K.K. 1983. Vegetative propagation of the thorny bamboo; *Bambusa arundinacea* (Retz.) Willd. using some growth regulators.
971. Suresh Babu, P.K; Menon, A.R.R; Suraj, M.A; Varghese, A.O; Pradeepkumar, M. 1997. High altitude shola and grassland studies using remote sensing.
972. Suresh, P.V; Sudheendrakumar, V.V; Binoy, C.F; Mathew, G; Narendran, T.C. 1999. The macro hymenopteran fauna of Parambikulam Wildlife Sanctuary.
973. Sutton, B.C; Sankaran, K.V. 1995. A new species of *Selenophoma* on *Elaeocarpus* from India.
974. Sutton, B.C; Sankaran, K.V. 1991. New names for *Chaetospora* and its type species.
975. Sutton, B.C; Sankaran, K.V. 1994. *Pseudocercospora elaeocarpi* sp. nov. on *Elaeocarpus* in India.
976. Swaran, P.R.; Varma, R.V. 2001. Root feeding termites - an emerging problem in root trainer raised teak seedlings in Kerala.
977. Swaran, P.R; Varma, R.V. 2003. Laboratory evaluation of the entomopathogenic fungus, *Metarhizium anisopliae* var. major against the subterranean termite, *Odontotermes guptai* Roonwal and Bose.
978. Swarupanandan, K. 1987. Fruits, seeds and seedlings of two Indian dipterocarps.
979. Swarupanandan, K. 1983. A new species of *Thottea Rottb.* (Aristolochiaceae) from India.
980. Swarupanandan, K. 1996. An analysis of physical basis and causes of rarity in the Asclepiadaceae R. Br. (s.l.) of Kerala.
981. Swarupanandan, K. 1983. An illegitimate *Pergularia* and tribal names *Ceropegieae*, *Marsdenieae*, *Stapelieae* (Asclepiadaceae).

982. Swarupanandan, K. 1986. Late embryogenesis and morphology of mature embryos in three species of Dipterocarpaceae.
983. Swarupanandan, K. 1983. Nomenclatural notes on sections of *Ceropegia* (Asclepiadaceae).
984. Swarupanandan, K. 1995. Perspectives on the Indian Asclepiadaceae.
985. Swarupanandan, K. 1987. Problems in the natural regeneration of the wet evergreen forests in Kerala (India).
986. Swarupanandan, K. 1991. Seedling morphology and some contemporary thoughts on the phylogeny and circumscription of the family Dipterocarpaceae.
987. Swarupanandan, K; Mangaly, J.K. 1992. A new species of *Ceropegia* Linn. from the Western Ghats of India.
988. Swarupanandan, K; Mangaly, J.K; Sonny, T.K; Kishorekumar, K; Chand Basha, S. 1996. The subfamilial and tribal classification of the family Asclepiadaceae.
989. Swarupanandan, K; Menon, A.R.R; Balasubramanyan, K. 1981. A new key for biological identification.
990. Swarupanandan, K; Nicolson, D.H. 1993. A new variety of *Tylophora tetrapetala* (Asclepiadaceae).
991. Swarupanandan, K; Sasidharan, N; Mangaly, J.K. 1989. A reconsideration of the generic circumscription of *Heterostemma Wight & Arn.* (Asclepiadaceae) and a new species from India.
992. Swarupandan, K; Sasidharan, N; Chacko, K.C; Chand Basha, S. 2001. Floristic and ecological studies on the Sholas of Idduki district.
993. Thomas, J; Easa, P.S. 1997. Additions to the reptile fauna of Silent Valley National Park.
994. Thomas, J; Shaji, C.P; Easa, P.S. 1997. Record of Leith's softshell turtle, *Aspideretes leithii*(Gray), (family Trionychidae) from Nilambur, Kerala.
995. Thomas, S.; Balasundaran, M. 2001. Screening for phytoplasma in host plants of spike disease affected sandal.
996. Thomas, T.P. 1988. Effect of N,P and K on the growth of *Bambusa arundinacea* seedlings in pots.
997. Thomas, T.P. 1991. Soils of Wynad Forest Division - a comparison between natural and plantation ecosystems.
998. Thomas, T.P; Sujatha, M.P. 1992. Environmental importance of (*Ochlandra travancorica*) with particular reference to soil conservation: A case study of Ranni Forest Division, Kerala, India.
999. Uniyal, Vinod Kumar; Easa, P.S. 1990. Parambikulam Wildlife Sanctuary: Status of elephant and management options.
1000. Vairavel, S.M; Shaji, C.P; Easa, P.S. 1998. *Hypselobarbus kolus* (Sykes) - an addition to Kerala.



1001. Valsala, K; Muralidharan, E.M. 1999. In vitro regeneration in three species of rattan (*Calamus* spp.).
1002. Valsala, K; Muralidharan, E.M. 1998. Plant regeneration from in vitro cultures of rattan (*Calamus*).
1003. Varghese, A.O.; Menon, A.R.R. 2001. Evaluation of the feasibility of remote sensing techniques in forest degradation analysis: A case study of Peppara Wildlife Sanctuary.
1004. Varghese, A.O; Balasubramanian, K. 1999. Structure, composition and diversity of the tropical wet evergreen forest of the Agasthyamalai region of Kerala, Western Ghats.
1005. Varghese, A.O; Menon, A.R.R. 1998. An interpretation key using aerial photographs for the land cover mapping of the forests of Kerala.
1006. Varghese, A.O; Menon, A.R.R. 1998. Assessment of biodiversity of Peppara Wildlife Sanctuary, Trivandrum District, Kerala.
1007. Varghese, A.O; Menon, A.R.R. 1997. Assessment of ecosystem and ecological levels of biodiversity: A case study of Peppara Wildlife Sanctuary.
1008. Varghese, A.O; Menon, A.R.R. 1999. Distribution pattern of tree species of Southern Western Ghats: A case study from Peppara Wildlife Sanctuary, Kerala, India.
1009. Varghese, A.O; Menon, A.R.R. 1999. Ecological niches and amplitudes of rare, threatened and endemic trees of Peppara Wildlife Sanctuary.
1010. Varghese, A.O; Menon, A.R.R. 1999. Floristic composition, dynamics and diversity of Myristica swamp forests of Southern-Western Ghats, Kerala.
1011. Varghese, A.O; Menon, A.R.R. 1998. Measurement of biodiversity based on taxonomical heterogeneity of communities using Pielou's Hierarchical Diversity Index.
1012. Varghese, A.O; Menon, A.R.R. 1999. Microlevel stratification of forest types of highly heterogeneous forests of Southern Western Ghats using aerial photographs.
1013. Varghese, A.O; Menon, A.R.R. 1999. Structure and status of the forests of Agasthyavanam Biological park.
1014. Varghese, A.O; Menon, A.R.R. 1998. Vegetation characteristics of southern secondary moist mixed deciduous forests of Agasthyamalai region of Kerala.
1015. Varghese A.O; Menon, A.R.R; Balasubramanian, K. 1999. Assessment of ecological amplitudes of tree species: A case study from Peppara Wildlife Sanctuary, Southern Western Ghats, India.
1016. Varghese, A.O; Menon, A.R.R; Suraj, M.A. 1998. Variability in the structure and composition of the moist deciduous forests in Kerala.
1017. Varghese, A.O; Menon, A.R.R; Suresh Babu, P.K; Suraj, M.A; Pradeepkumar, M. 1996. Remote sensing data utilisation in bamboo stock mapping.
1018. Varma, R.V. 1990. Effect of juvenile hormone analogues on *Odontotermes guptai* (Isoptera: Termitidae) under laboratory conditions.

1019. Varma, R.V. 1990. El problema de los termites en las plantaciones forestales y Su control en la India.
1020. Varma, R.V. 1985. Hormonal mechanisms of soldier differentiation in *Postelectrotermes nayari*.
1021. Varma, R.V. 1992. Impact of *Atteva fabriciella* (Lepidoptera: Yponomeutidae) feeding on seed production in *Ailanthus triphysa*.
1022. Varma, R.V. 1996. Impact of *Atteva fabriciella* (Lepidoptera: Yponomeutidae) on growth of *Ailanthus triphysa*.
1023. Varma, R.V. 1989. New record of *Panthous bimaculatus* (Hemiptera: Reduviidae) as a predator of pests of *Ailanthus triphysa*.
1024. Varma, R.V. 1984. New records of insects damaging *Eucalyptus* in the nursery in Kerala, India.
1025. Varma, R.V. 1994. Pests of *Albizia* spp. and their management.
1026. Varma, R.V. 1994. Pests of *Ailanthus* and their management.
1027. Varma, R.V. 1990. The termite problem in forest plantations and its control in India.
1028. Varma, R.V. 1997. White grub damage and its control in teak nurseries.
1029. Varma, R.V; Balasundaran, M. 1990. Tea mosquito (*Helopeltis antonii*) feeding as a predisposing factor for entry of wound pathogens in cashew.
1030. Varma, R.V; Balagopalan, M; Nair, K.S.S. 1995. Field evaluation of neem cake as a possible protectant against subterranean termites attacking *Eucalyptus* seedlings.
1031. Varma, R.V; Gnanaharan, R. 1989. Field evaluation of preservative treated rubber wood (*Hevea brasiliensis*) against subterranean termites.
1032. Varma, R.V; Mathew, G; Mohanadas, K; Gnanaharan, R; Nair, K.S.S. 1988. Laboratory evaluation of insecticides for the control of the bamboo borers, *Dinoderus minutus* and *D. ocellaris* (Coleoptera: Bostrychidae).
1033. Varma, R.V; Mohamed Ali, M.I. 1986. *Bacillus firmus* as a new insect pathogen on a lepidopteran pest of *Ailanthus triphysa*.
1034. Varma, R.V; Mohamed Ali, M.I; Sudheendrakumar, V.V. 1988. Comparative pathogenicity of some *Bacillus thuringiensis* strains on larvae of *Eligma narcissus* (Lepidoptera, Noctuidae), a major pest of *Ailanthus triphysa*.
1035. Varma, R.V; Mohanadas, K; Mathew, G; Nair, K.S.S. 1989. Laboratory evaluation of some insecticides against *Pteroma plagiophleps* Hampson a bagworm pest of *Albizia falcataria*.
1036. Varma, R.V; Mohanan, C. 1988. *Paecilomyces farinosus*, a potential biological control agent for major pests of *Ailanthus* in Kerala, India.
1037. Varma, R.V; Nair, K.S.S. 1986. Evaluation of insecticides and application methods against subterranean termites in eucalypt plantations.

1038. Varma, R.V; Reghunandanan, V.R; Ambika, B. 1984. Response of the subterranean termite, *Odontotermes guptai* (Isoptera: Termitidae) to extracts of eucalypt root and certain other plant materials.
1039. Veeramani, A; Easa, P.S.; Jayson, E.A. 2003. Sandal tree damage by Gaur (*Bos gaurus* L.) in Marayur forest range, Kerala.
1040. Veeramani, A; Easa, P.S; Jayson, E.A. 2004. Socio-econommic status of cultivators and their interface with wild animals: A case study of Marayur forest range, Kerala.
1041. Veeramani, A; Jayson, E.A. 1995. A survey of crop damage by wild animals in Kerala.
1042. Veeramani, A; Jayson, E.A; Easa, P.S. 1996. Man - Wildlife conflict: Cattle lifting and human casualties in Kerala.
1043. Veeramnai, A; Easa, P.S; Jayson, E.A. 2004. An evaluation of crop protection methods in Kerala.
1044. Venkatesh Nayak, S.N; Ramachandra Swamy, H; Nagaraj, B.C; Usha Rao; Chandrashekara, U.M. 2000. Farmers' attitude towards sustainable management of Soppina Betta forests in Sringeri area of the Western Ghats, South India.
1045. Venkatesh, C.S. 1981. Botanical research in relation to forestry.
1046. Venkatesh, C.S; Seethalakshmi, K.K; Surendran, T. 1983. Simple new techniques for bamboo propagation.
1047. Vijayakumaran Nair, P. 1991. GIS on bamboo distribution in Kerala. In: Bamboo in Asia and the Pacific.
1048. Vijayakumaran Nair, P; Menon, A.R.R. 1998. Estimation of bamboo resources in Kerala by remote sensing techniques.
1049. Viswanath, S; Surendran, T; Chacko, K.C; Suresh, Chand. 1996. Effect of fruit grading, pre-sowing treatments and media on germination and growth of *Tectona grandis* .
1050. Yekantappa, K; Bhat, K.M; Dhamodaran, T.K. 1990. Rattan (cane) processing techniques in India: A case study of oil curing.
1051. Yesodharan, K; Sharma, J.K. 1987. *Phomopsis ichnocarpi* sp. nov. on *Ichnocarpus frutescens*.
1052. Zacharias, V.J; Mohanadas, K. 1990. Bird predators of the teak defoliator, *Hyblaea puera*.